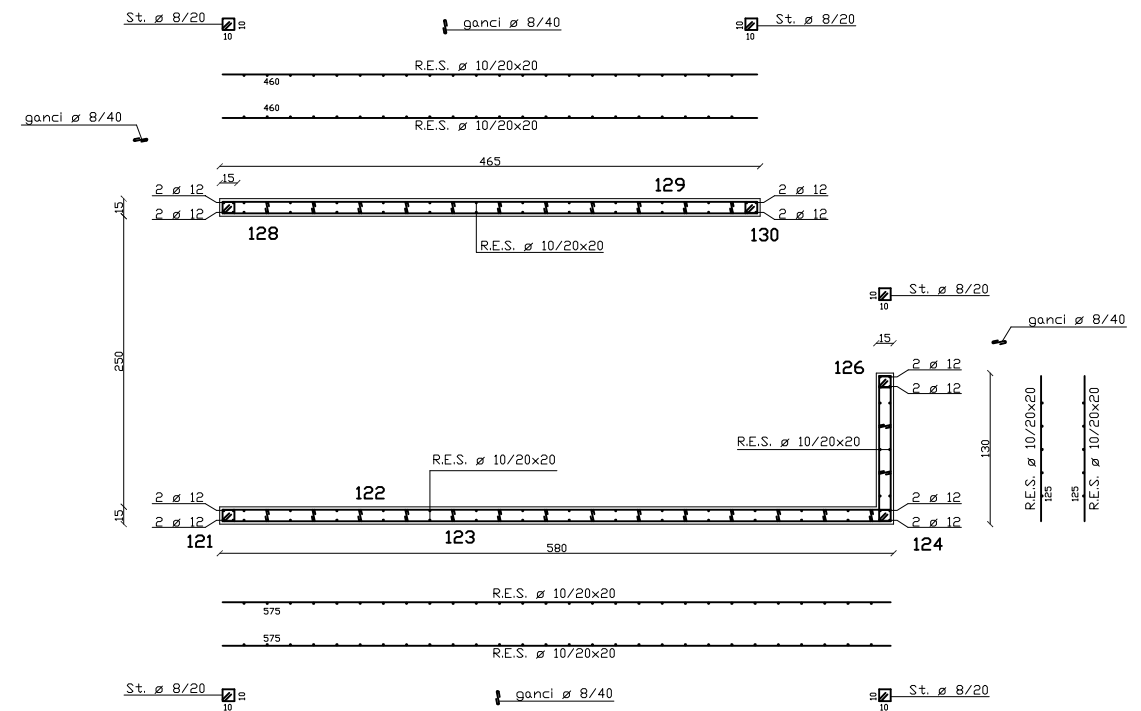
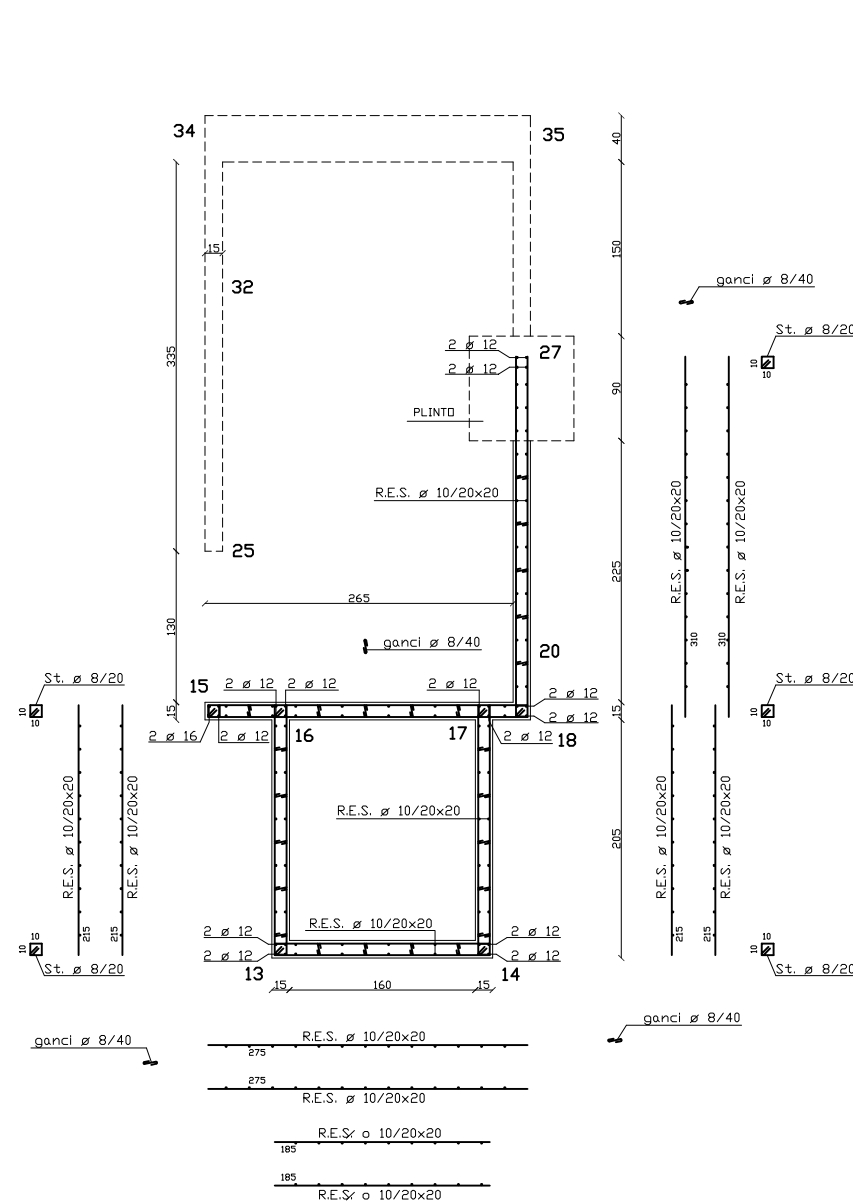


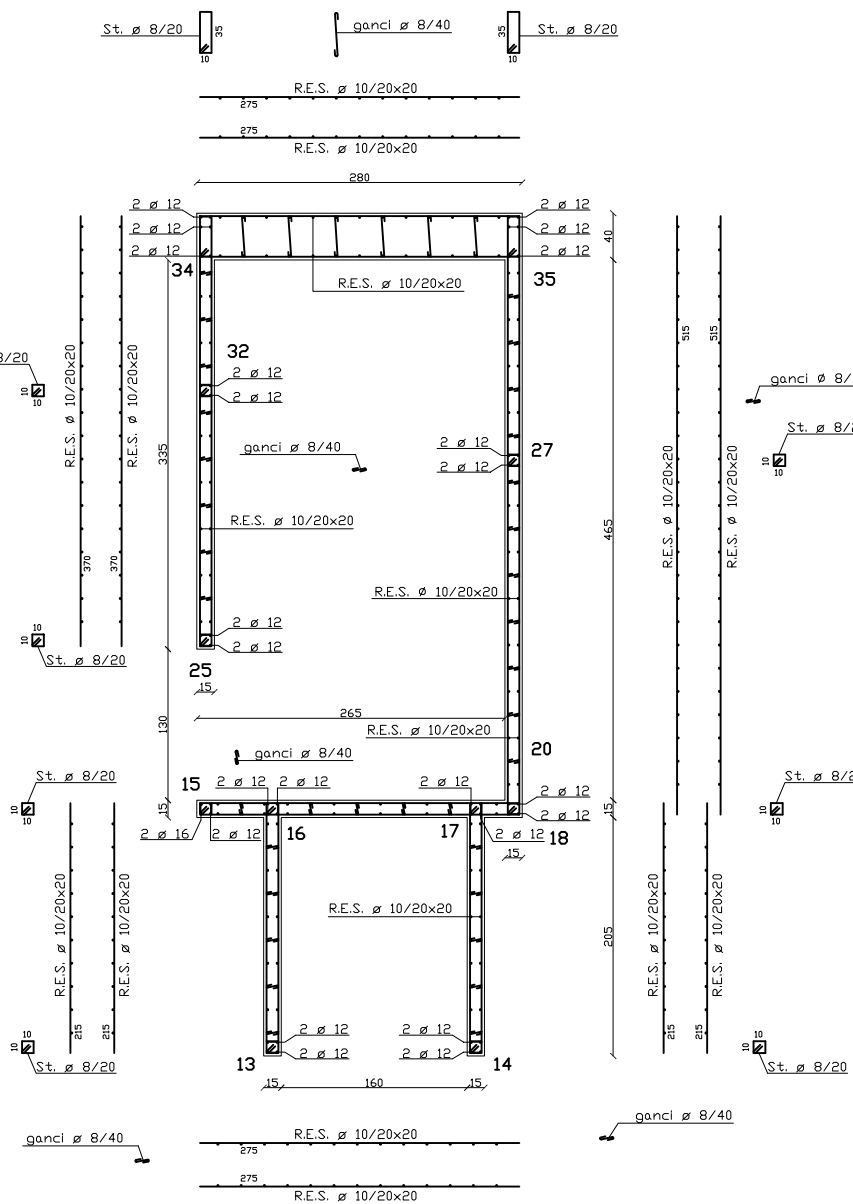
ARM. SETTI IN C.A. VAND SCALA LATERALE  
DA Q. FONDAZIONI A Q. +0,40 (P. TERRA) 1:25



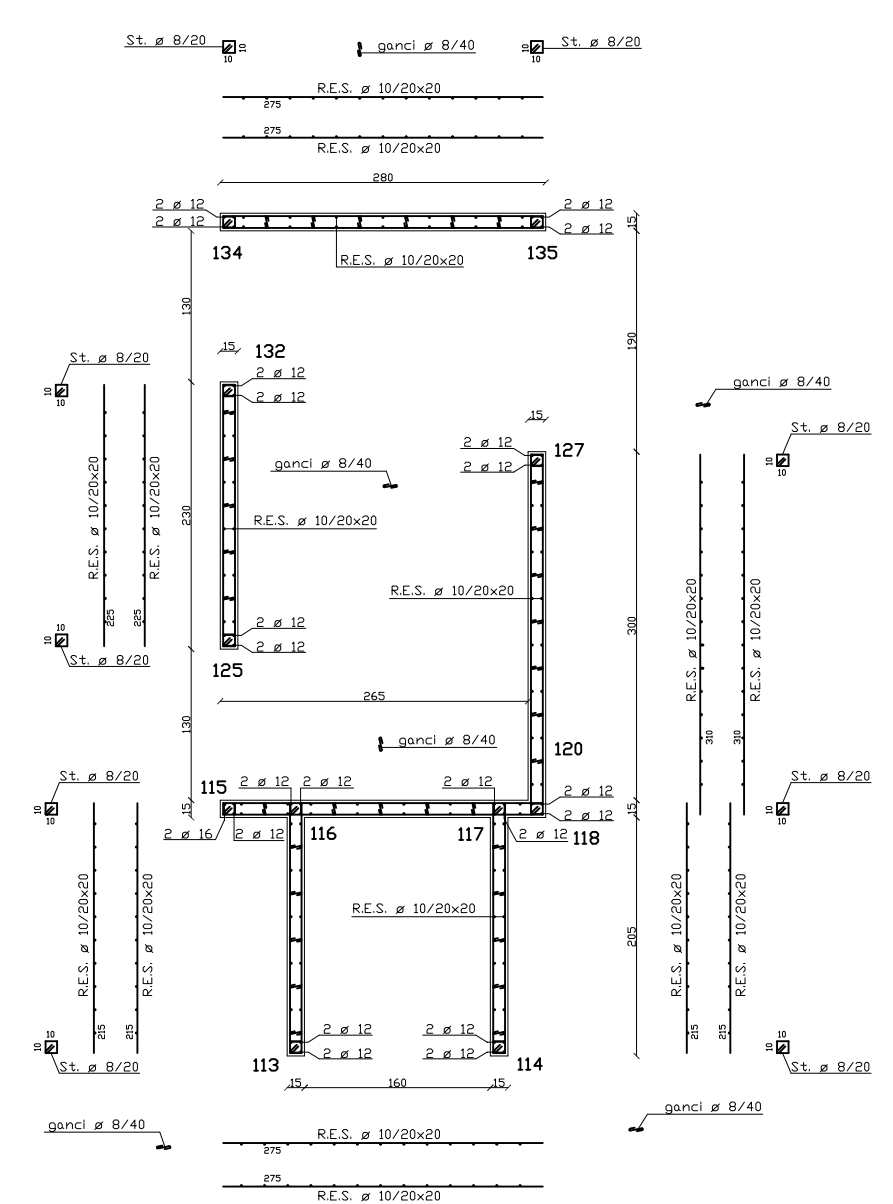
ARM. SETTI IN C.A. VAND SCALA LATERALE  
DA Q. +0,40 (P. TERRA) A Q. COPERTURE 1:25



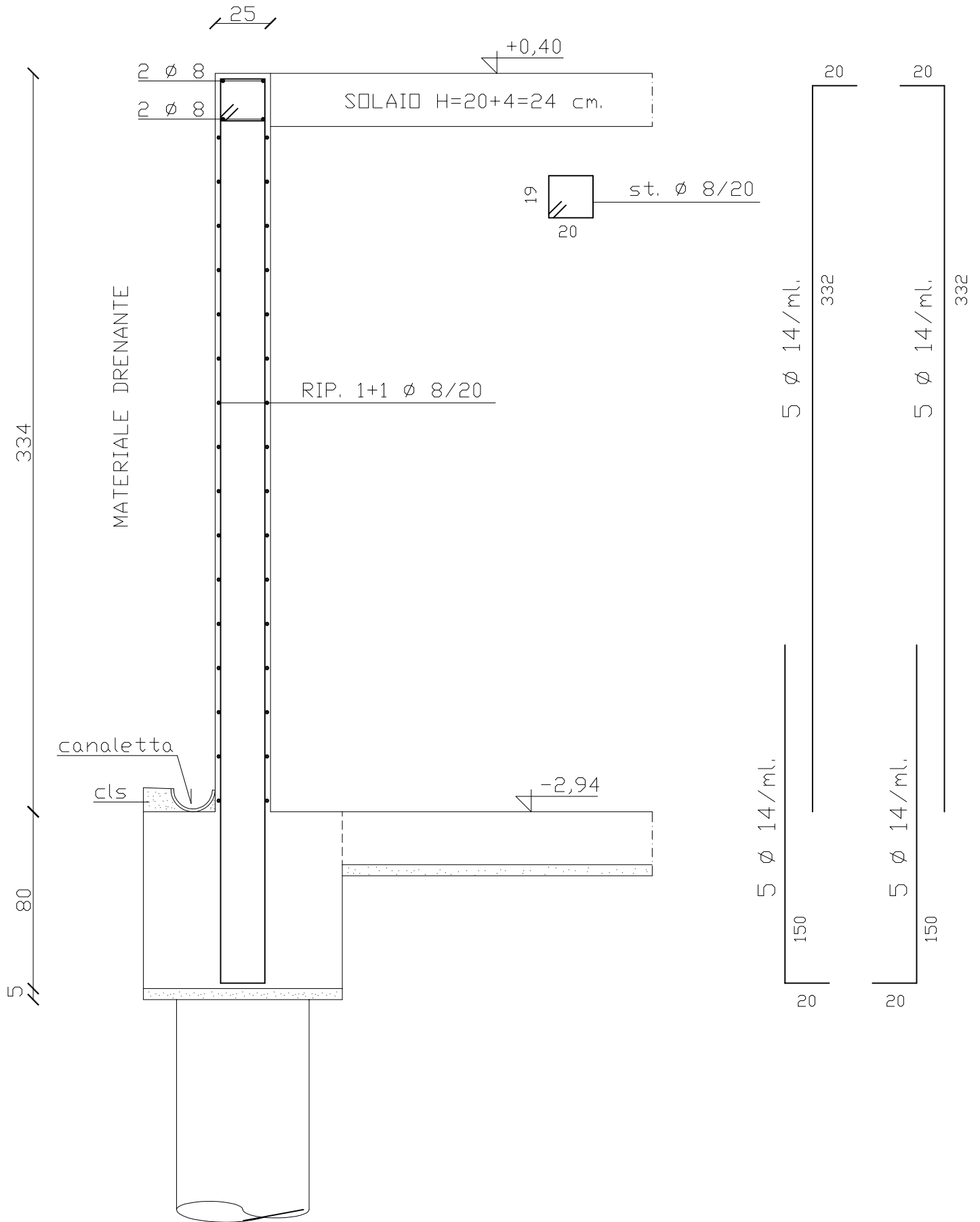
ARM. SETTI IN C.A. VAND SCALA CENTRALE E VAND ASCENSORE  
DA Q. -4,44 A Q. -2,94 (FONDAZIONI) 1:25



ARM. SETTI IN C.A. VAND SCALA CENTRALE E VAND ASCENSORE  
DA Q. -2,94 (FONDAZIONI) A Q. +0,40 (P. TERRA) 1:25

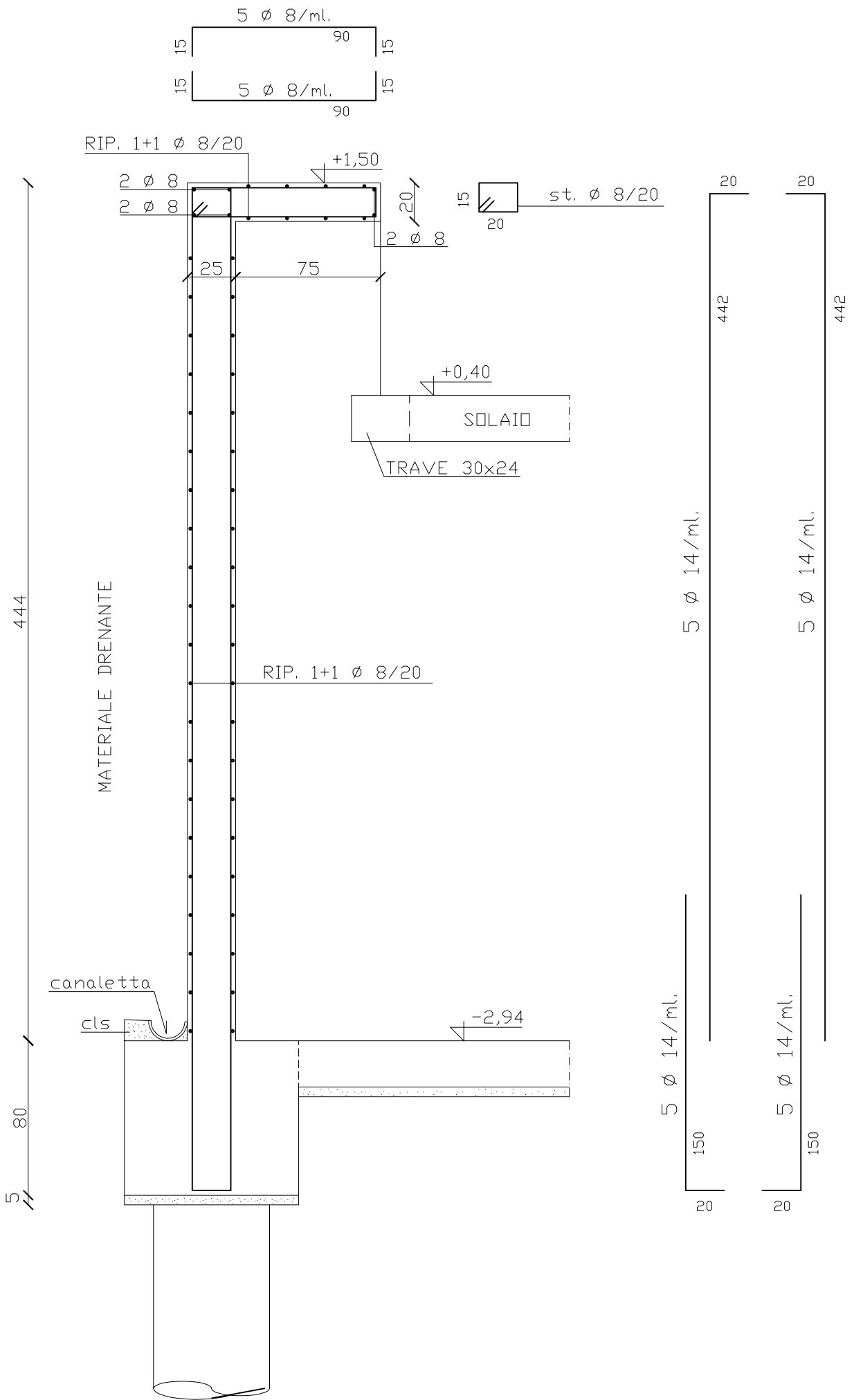


ARM. SETTI IN C.A. VAND SCALA CENTRALE E VAND ASCENSORE  
DA Q. +0,40 (P. TERRA) A Q. COPERTURE 1:25



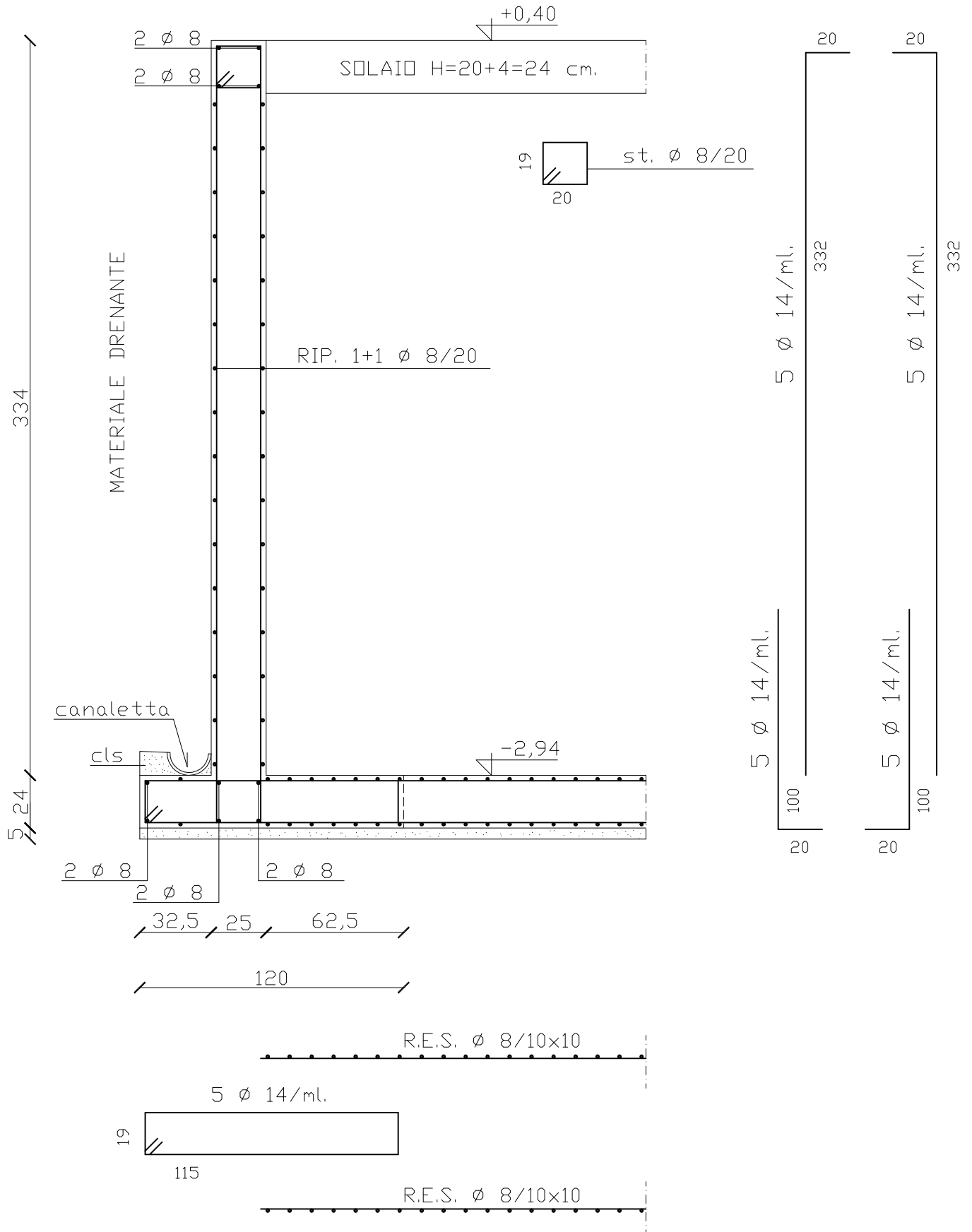
ARM. PARETI IN C.A. 39-40, 40-6

1:25

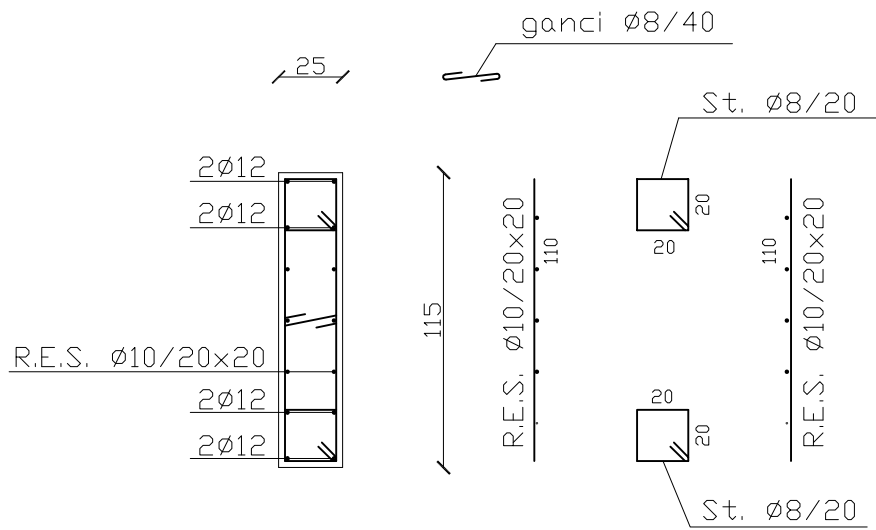


ARM. PARETI IN C.A. 2-37-38-39

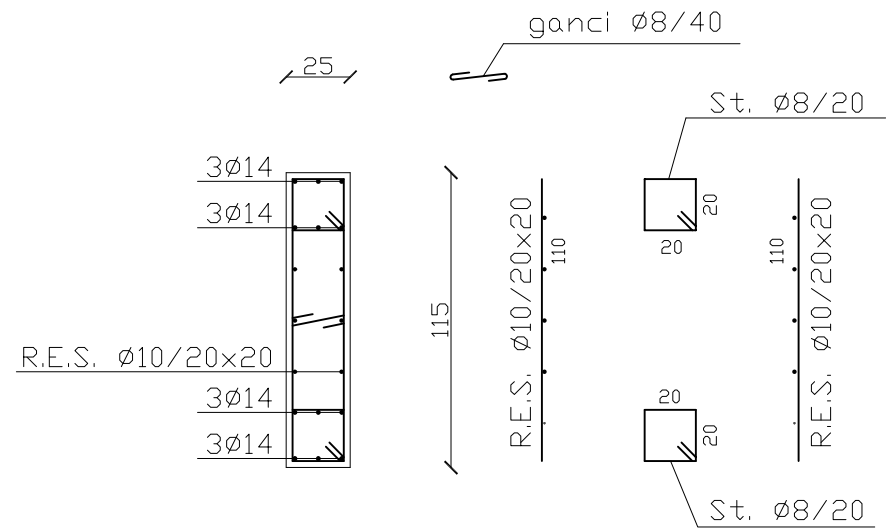
1:25



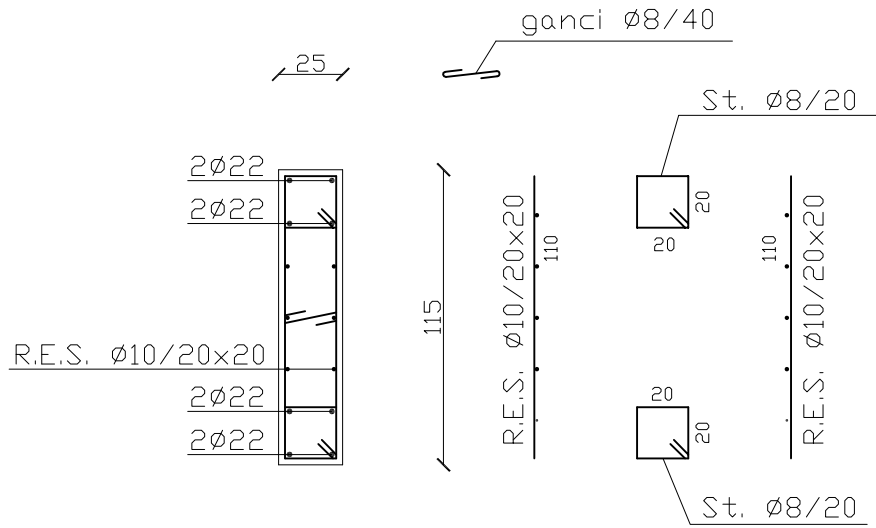
ARM. PARETI IN C.A. 1-8-19-33, 6-12-24, 26-31-36  
 E ZONA ESISTENTE 1:25  
 ARM. SOLETTA IN C.A. DI FONDAZIONE A Q. -2,94



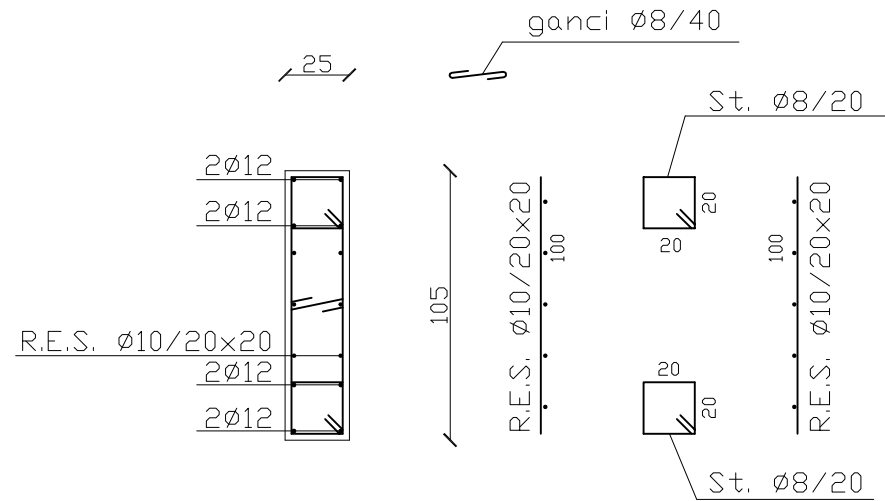
ARM. SETTI IN C.A. 15-23, 16-24 E 17-38  
1:25



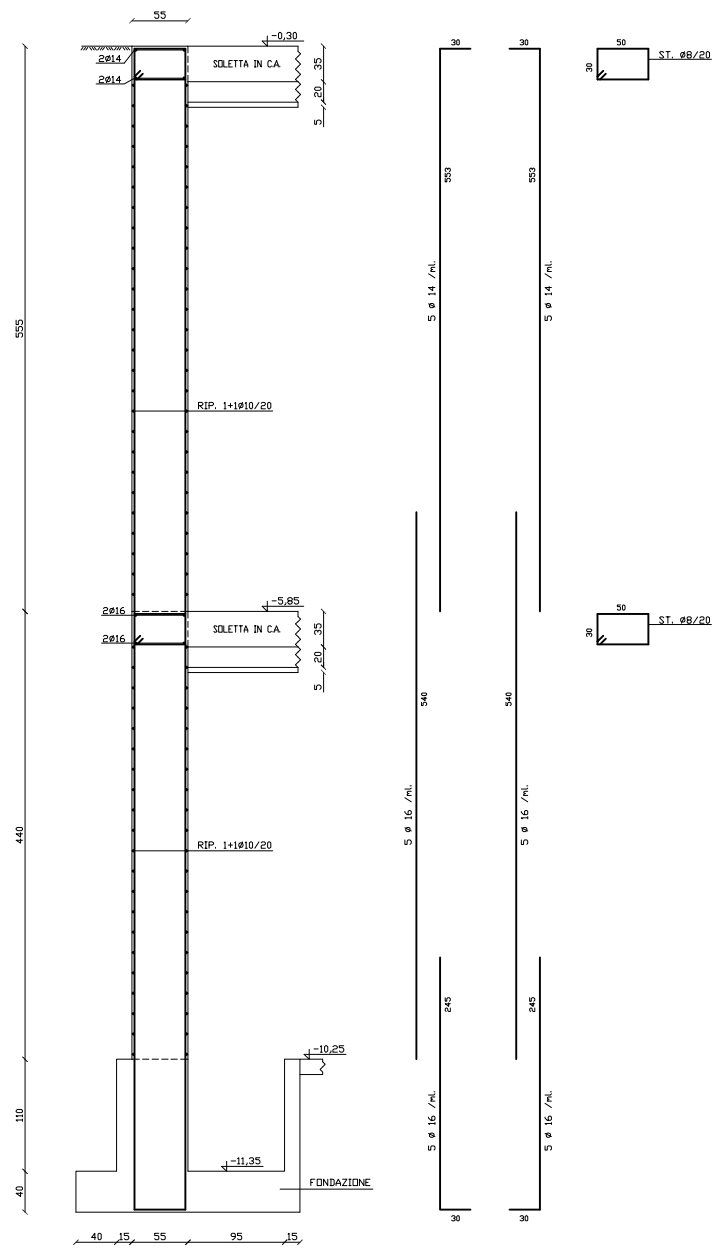
ARM. SETTO IN C.A. 13-22  
1:25



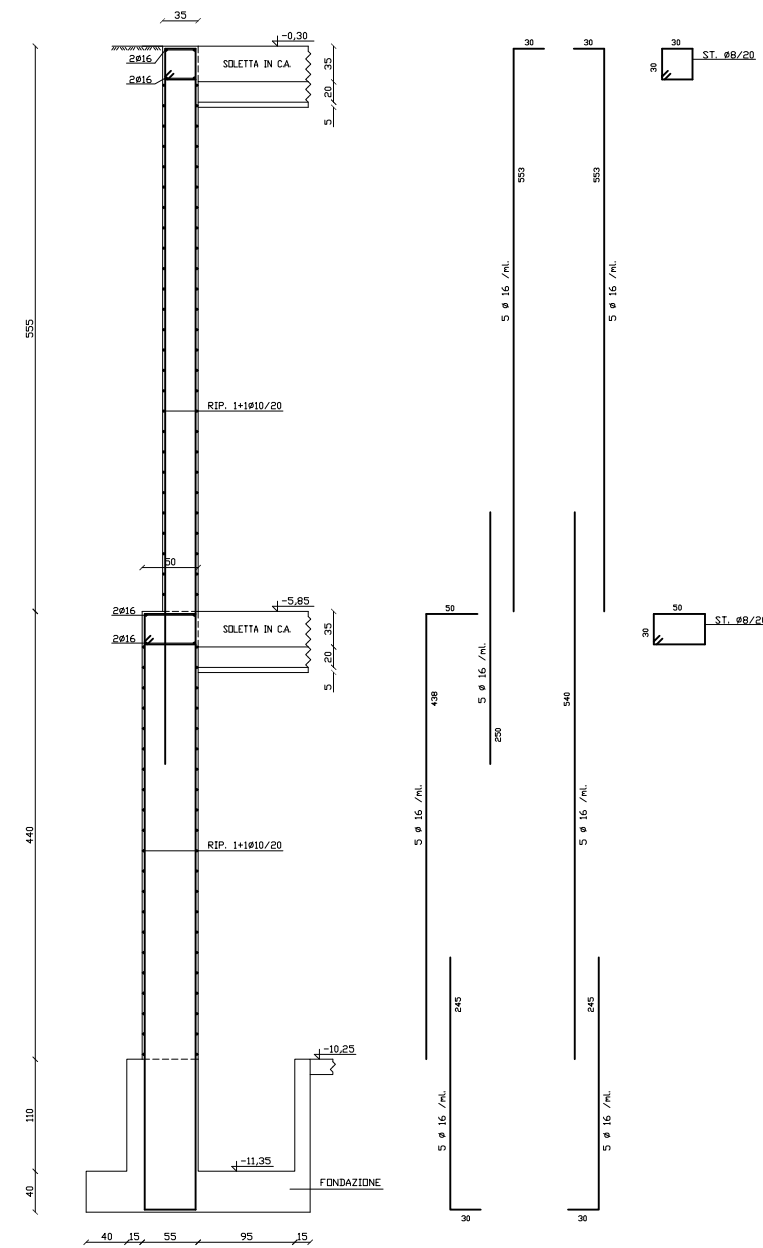
ARM. SETTI IN C.A. 10-19, 12-20 E 40-49  
1:25



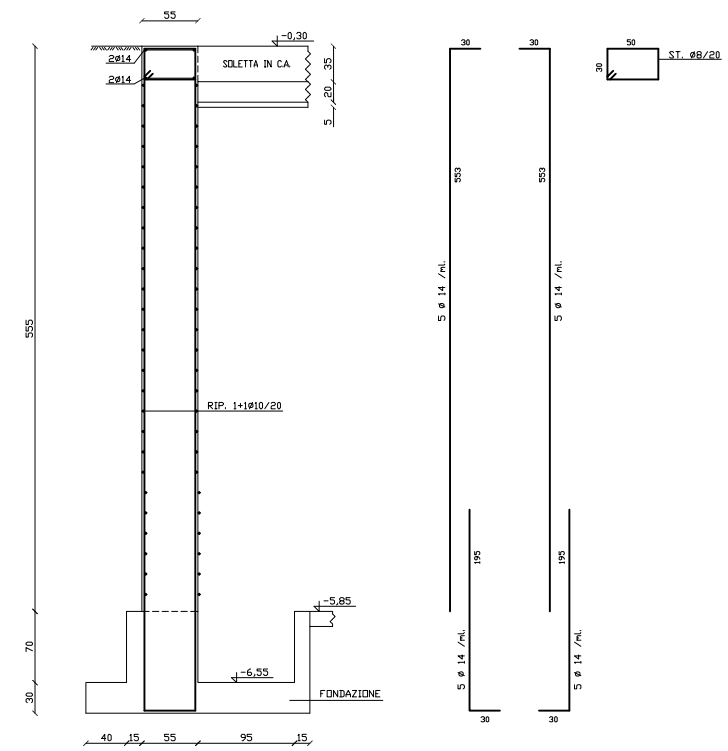
ARM. SETTO IN C.A. 27-38  
1:25



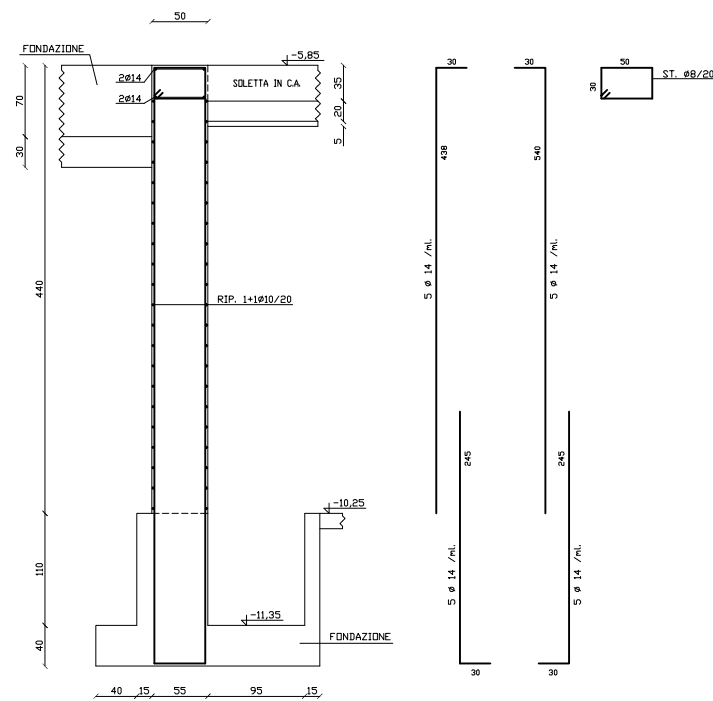
ARM. PARETE IN C.A. TRA I NODI 1-2-3-4-5-6-7-8-9-10  
DA Q.-10,25 A Q.-0,30 1:25



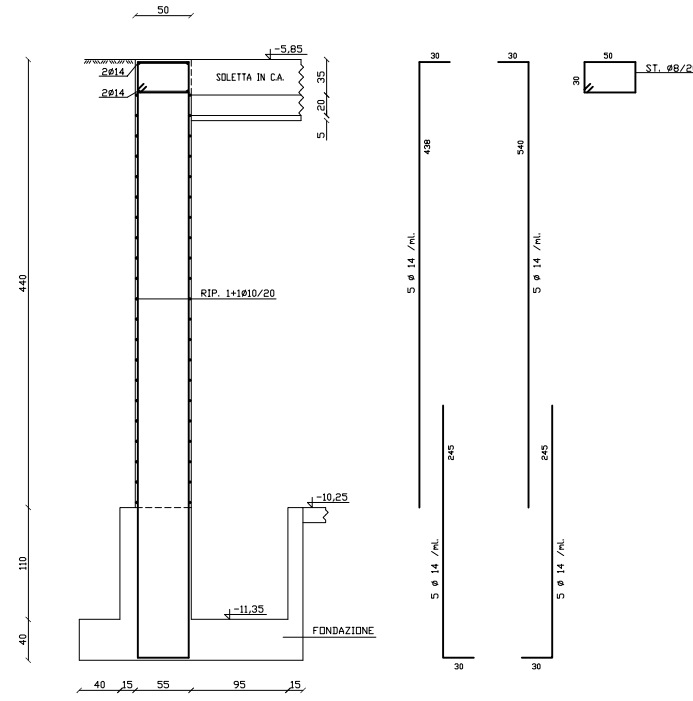
ARM. PARETE IN C.A. TRA I NODI 10-12-23-27-37  
DA Q.-10,25 A Q.-0,30 1:25



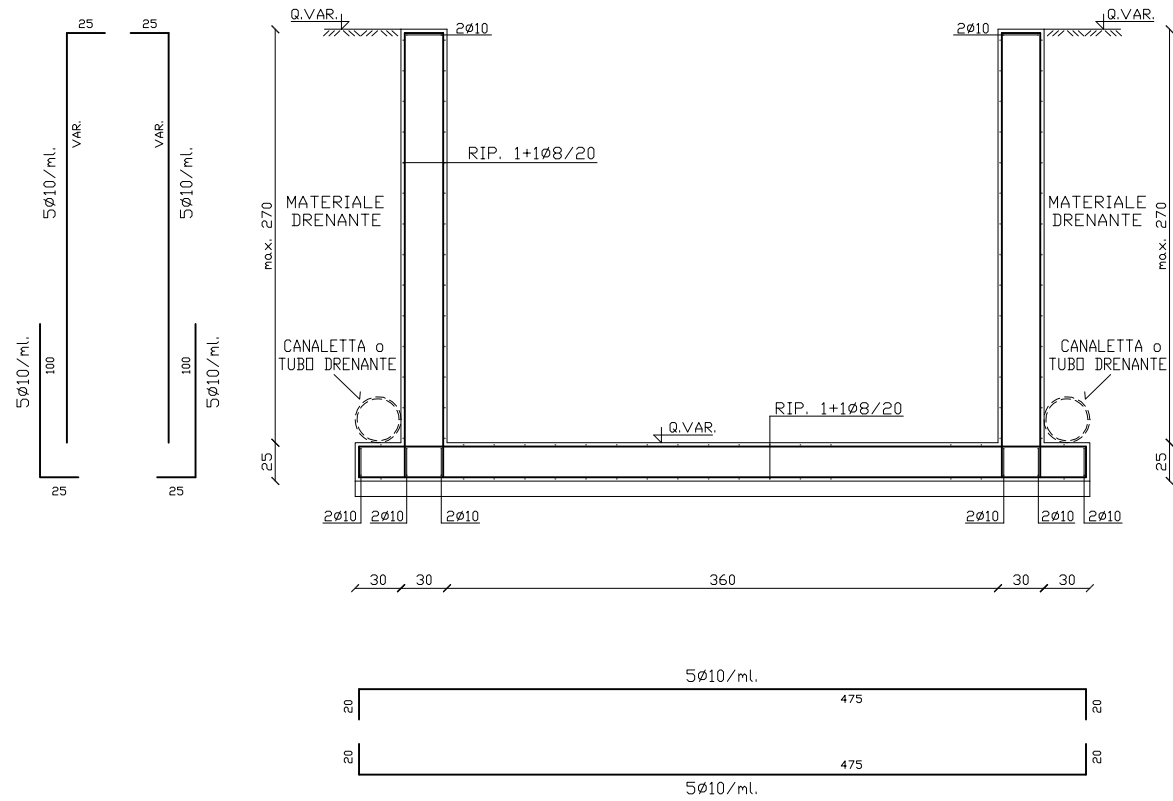
ARM. PARETE IN C.A. TRA I NODI 138-139-140-101 E 138-141-146  
DA Q.-5,85 A Q.-0,30 1:25



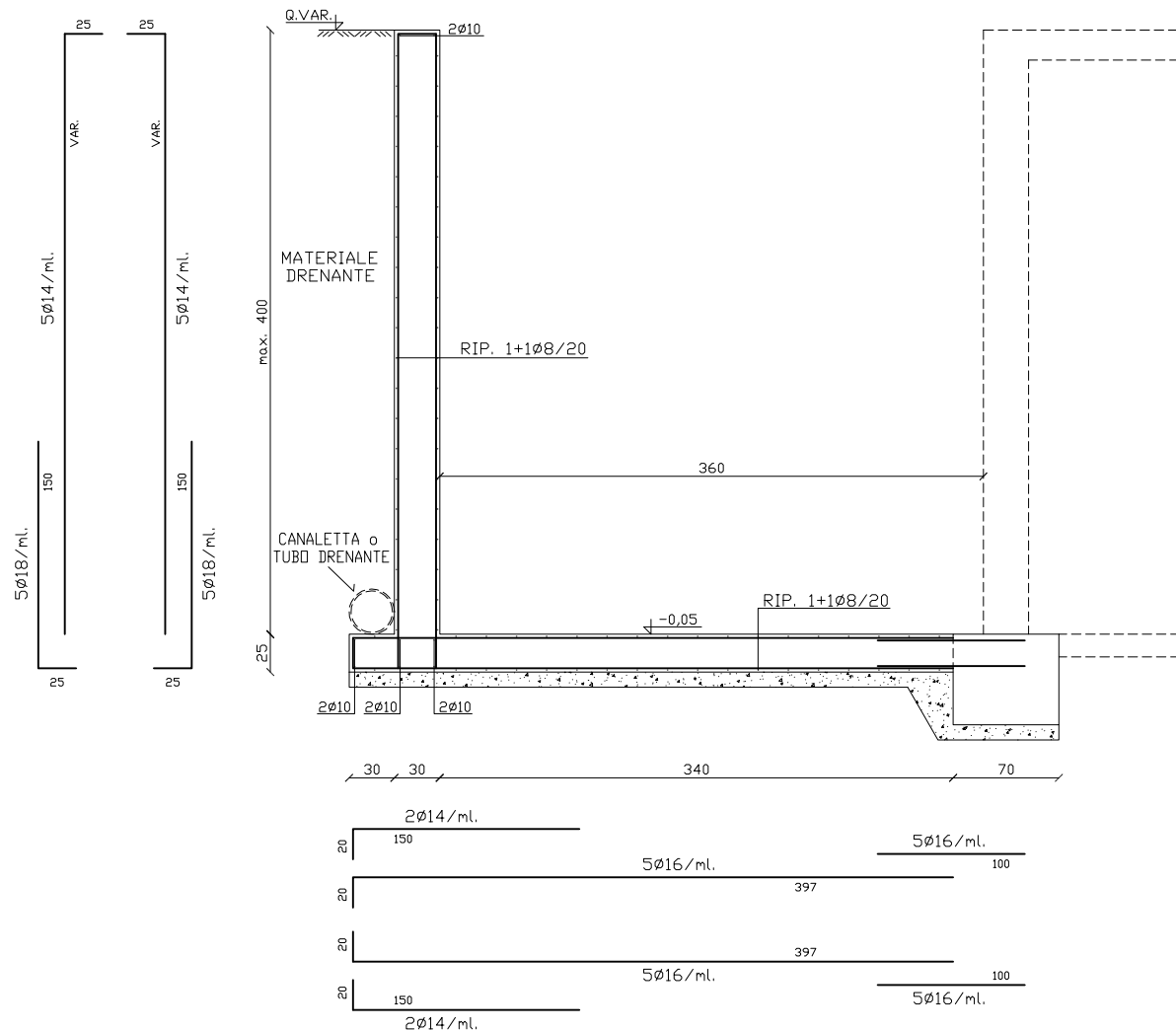
ARM. PARETE IN C.A. TRA I NODI 1-13-28  
DA Q.-10,25 A Q.-5,85 1:25



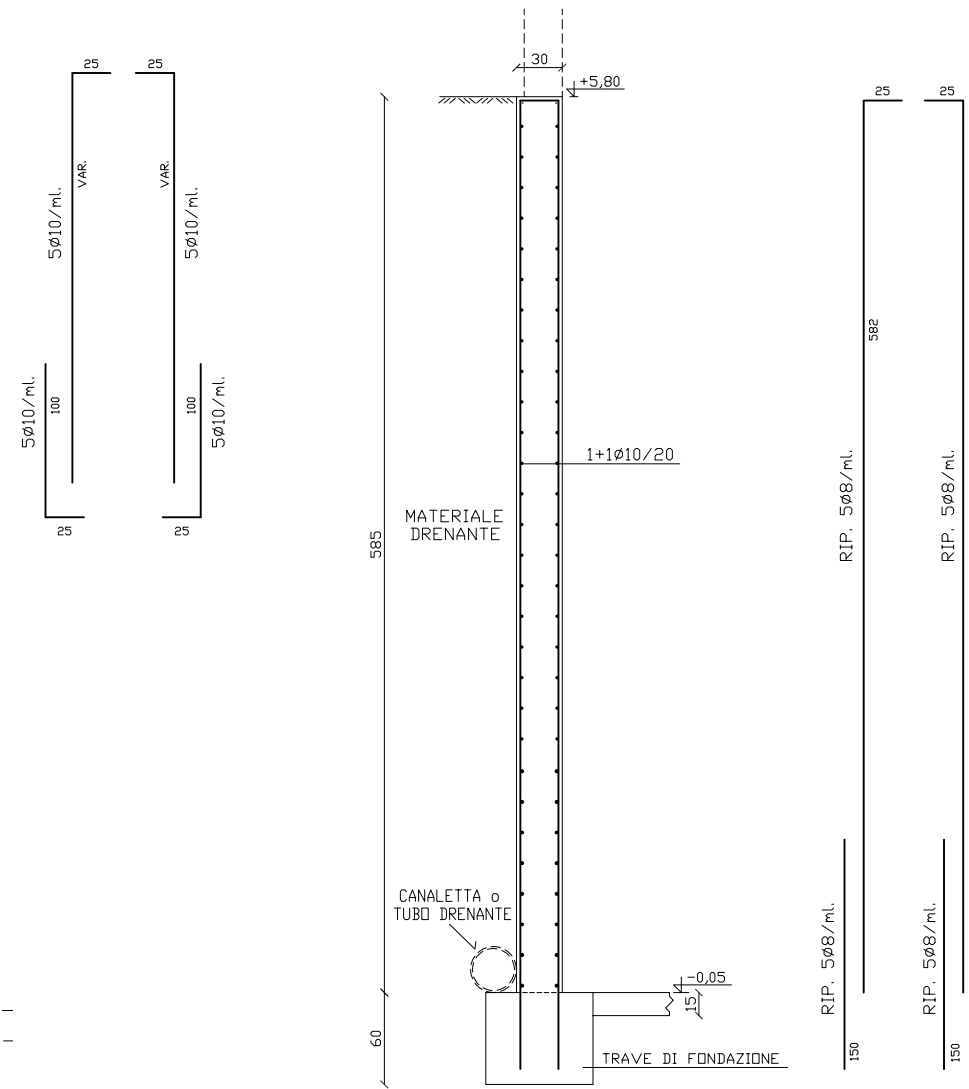
ARM. PARETE IN C.A. TRA I NODI 28-29-30-31-32-33-34-35-36-37  
DA Q.-10,25 A Q.-5,85 1:25



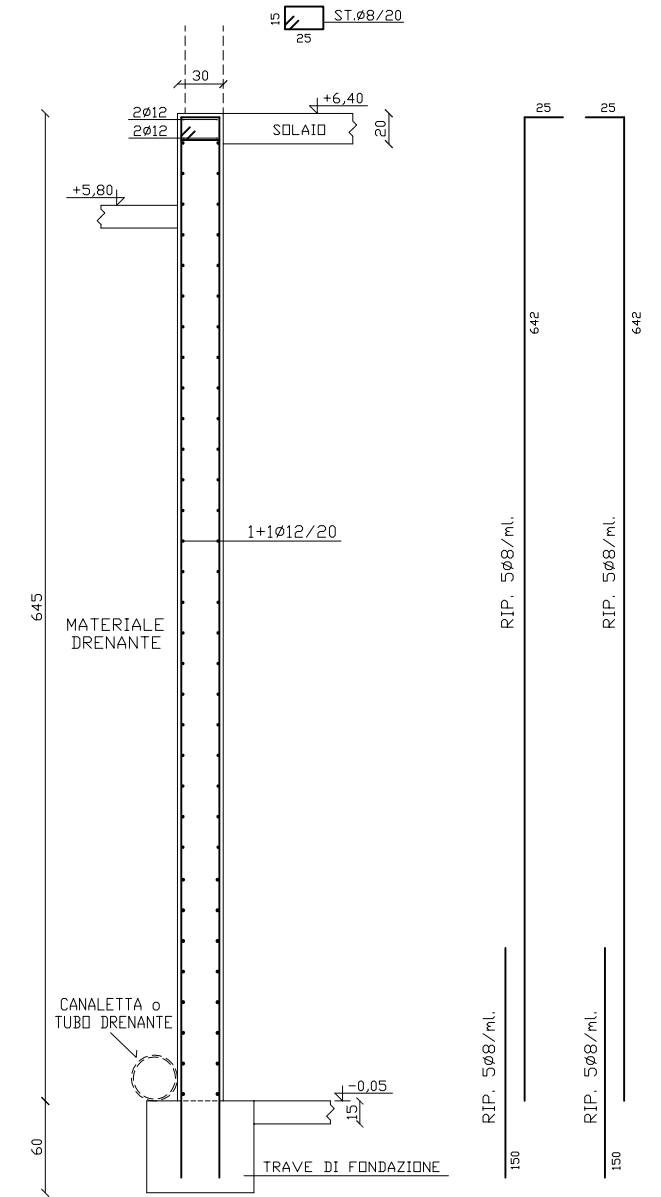
ARM. PARETE E SOLETTA IN C.A. RAMPA DI ACCESSO - TRATTO B 1:25



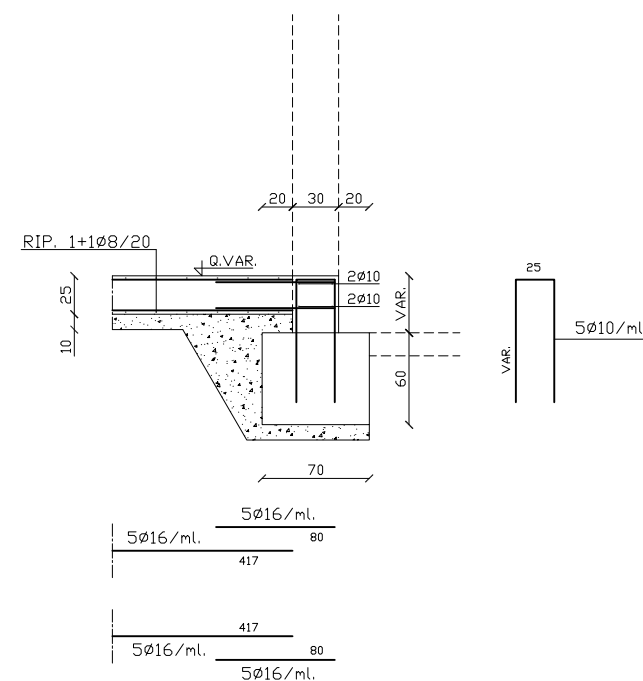
ARM. PARETE E SOLETTA IN C.A. RAMPA DI ACCESSO - TRATTO A 1:25



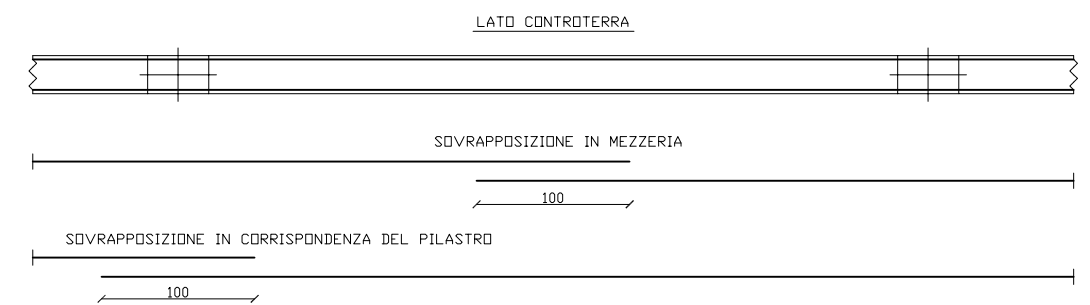
ARM. PARETE TRA I PILASTRI/SETTI H=5,85 m. CAMPATE 1-2, 3-4, 5-6 E 7-8 1:25



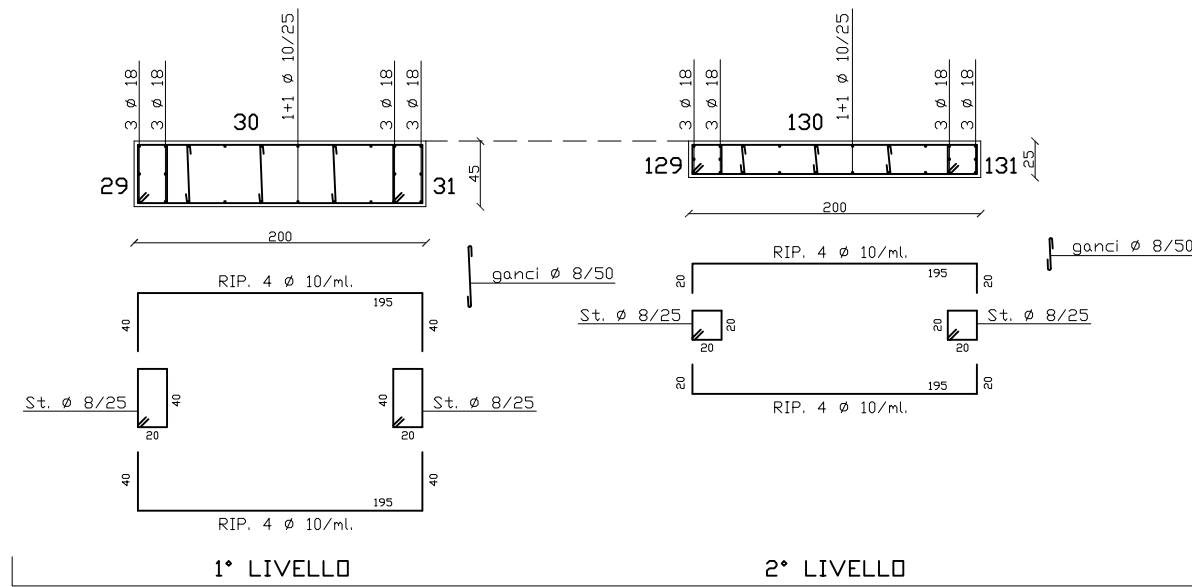
ARM. PARETE TRA I PILASTRI/SETTI H=6,45 m. CAMPATA 11-12 1:25



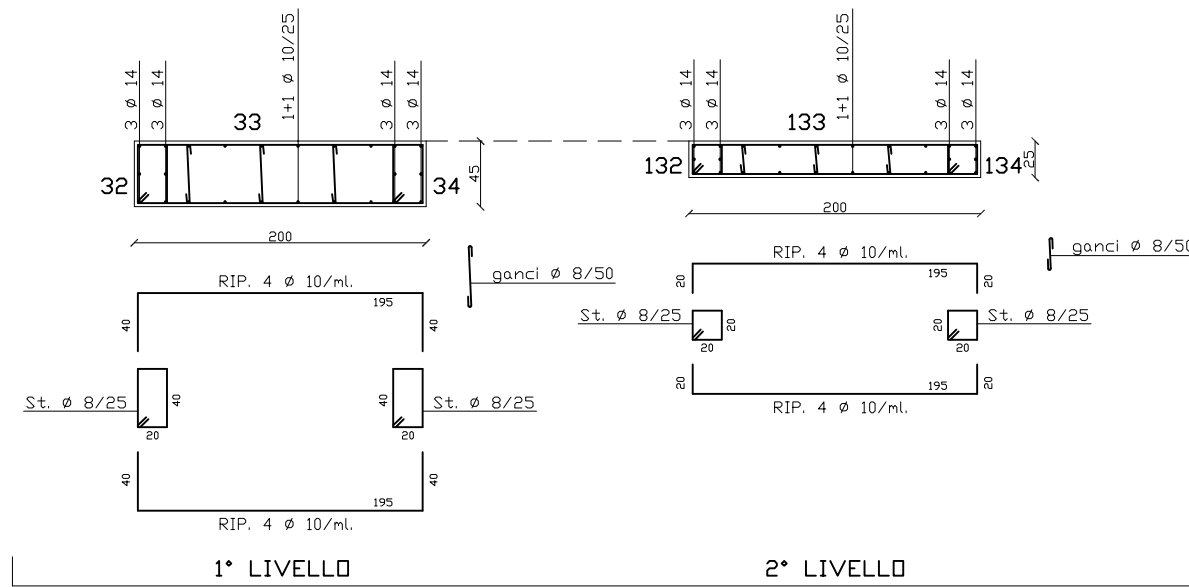
PART. COLLEGAMENTO SOLETTA RAMPA/ TRAVE DI FONDAZIONE A Q.VARIABILE TRATTO A 1:25



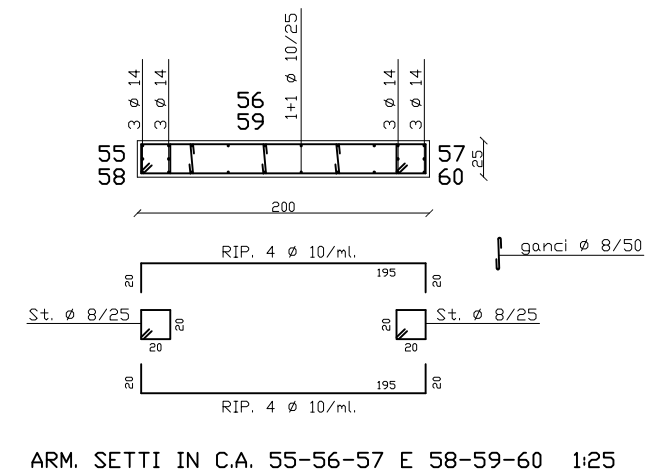
PART. SOVRAPPOSIZIONE ARMATURE DELLE PARETI TRA I PILASTRI 1:25



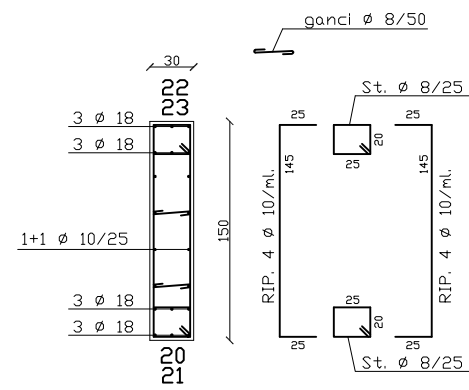
ARM. SETTO IN C.A. 29-30-31 1:25



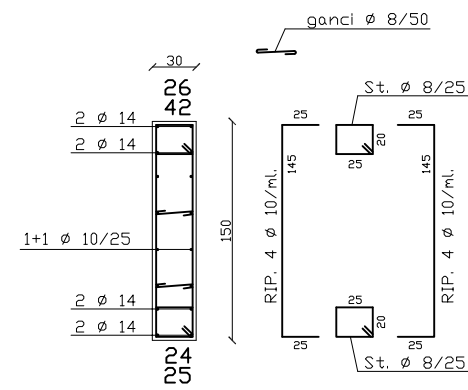
ARM. SETTO IN C.A. 29-30-31 1:25



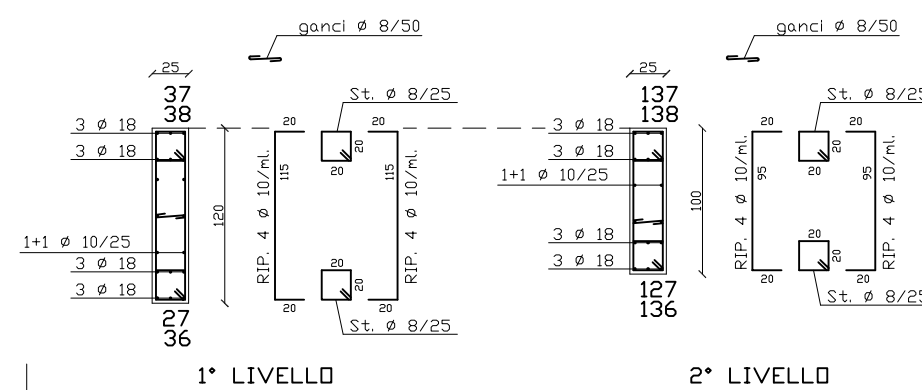
ARM. SETTI IN C.A. 55-56-57 E 58-59-60 1:25



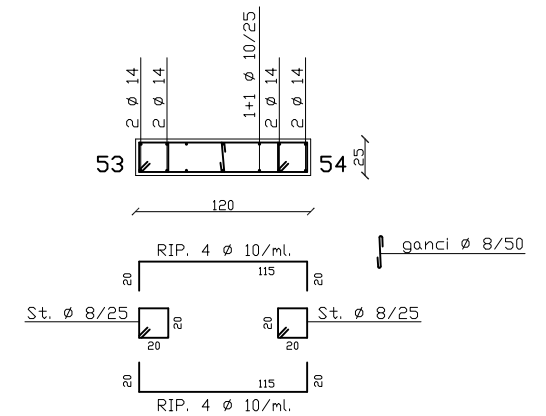
ARM. SETTI IN C.A. 20-22 E 21-23 1:25



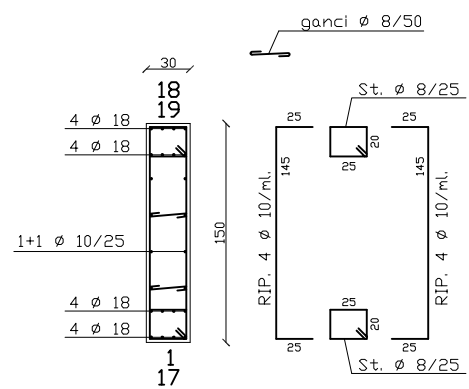
ARM. SETTI IN C.A. 24-26 E 25-42 1:25



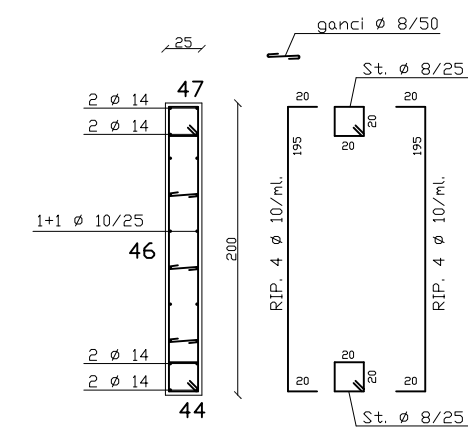
ARM. SETTI IN C.A. 27-37 E 36-38 1:25



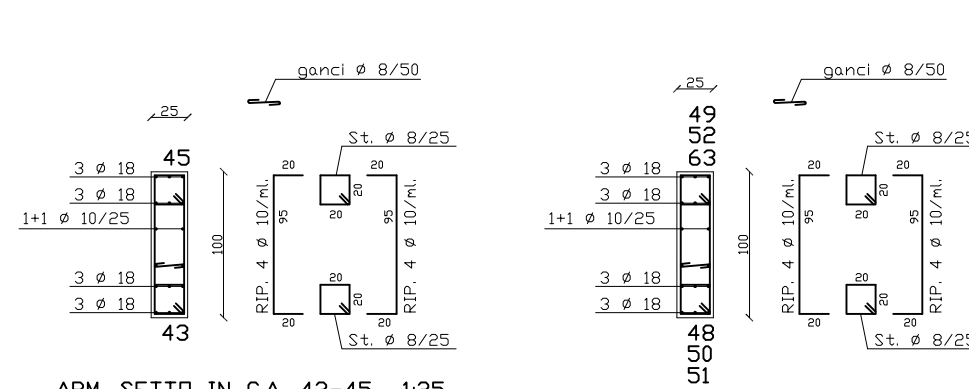
ARM. SETTO IN C.A. 53-54 1:25



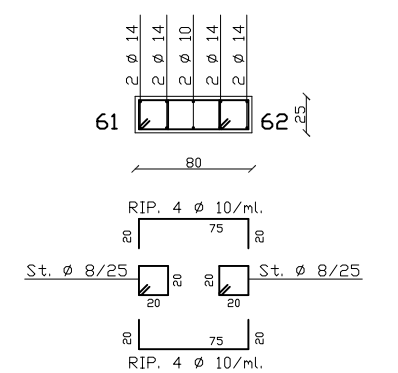
ARM. SETTI IN C.A. 1-18 E 17-19 1:25



ARM. SETTO IN C.A. 39-40-41 1:25

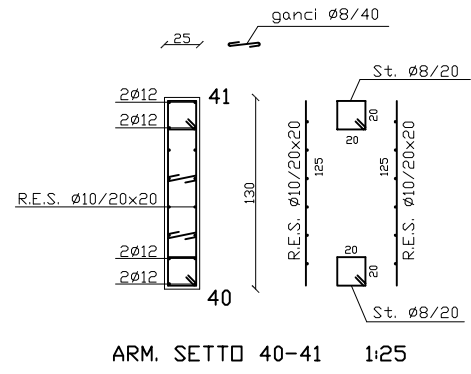


ARM. SETTI IN C.A. 48-49, 50-52 E 51-63 1:25

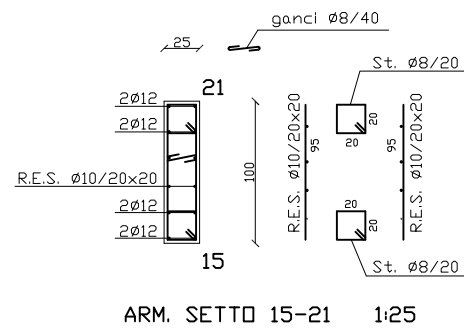


ARM. SETTO IN C.A. 61-62 1:25

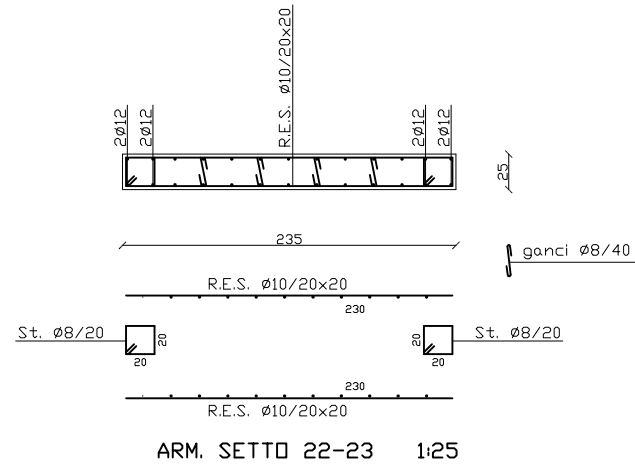




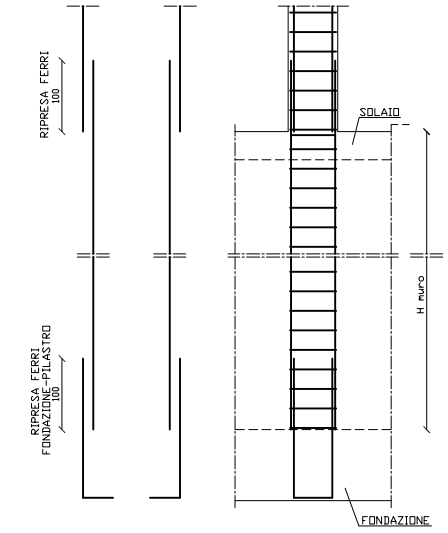
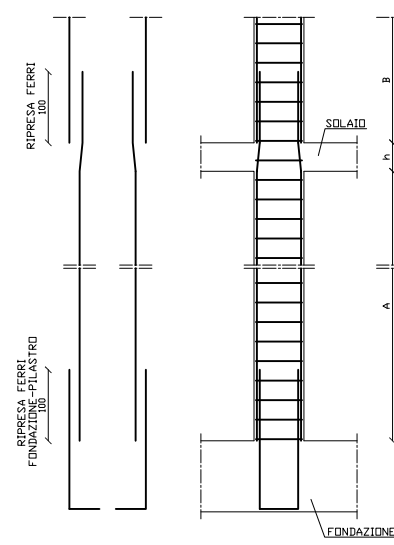
ARM. SETTO 40-41 1:25



ARM. SETTO 15-21 1:25

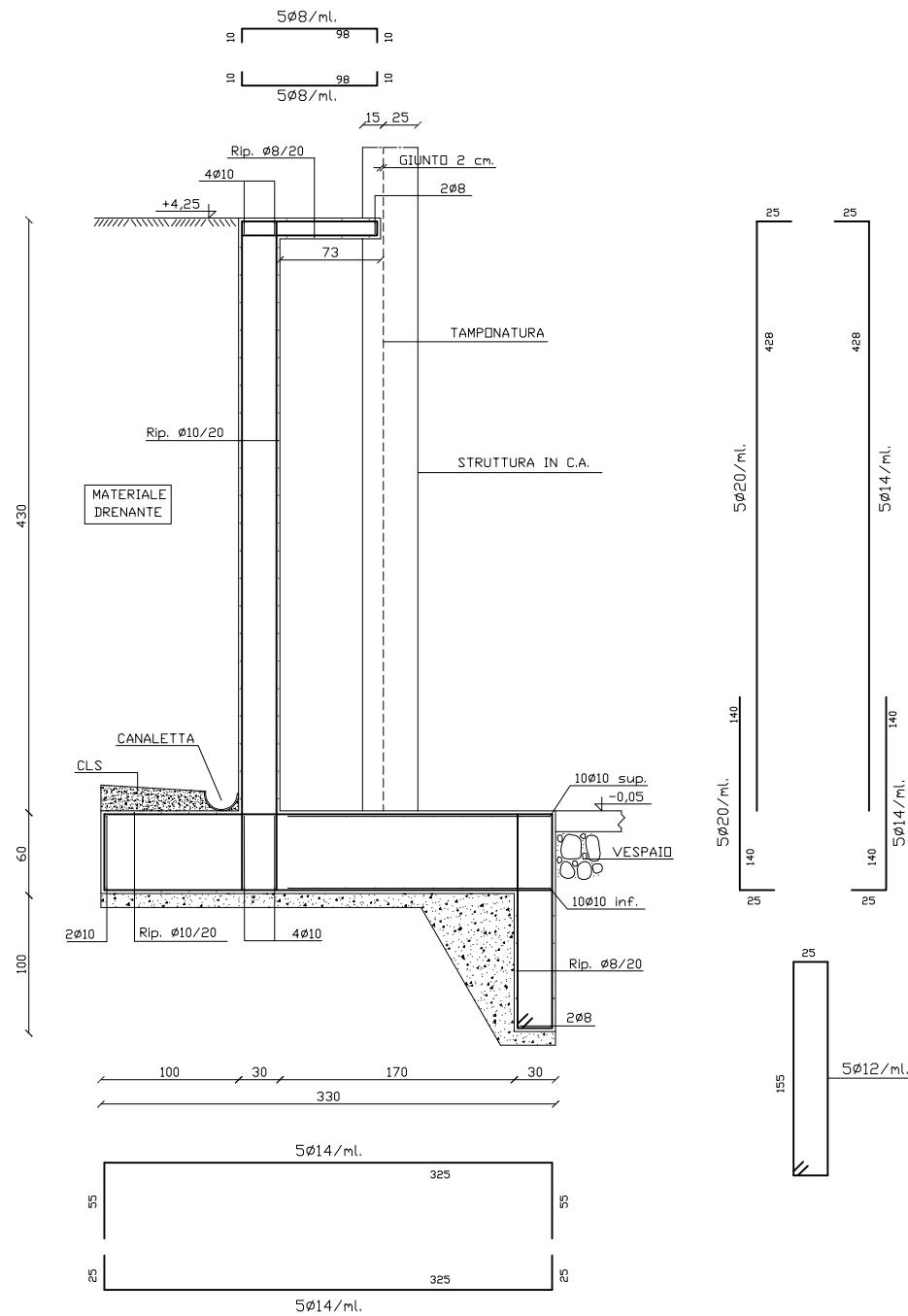


ARM. SETTO 22-23 1:25

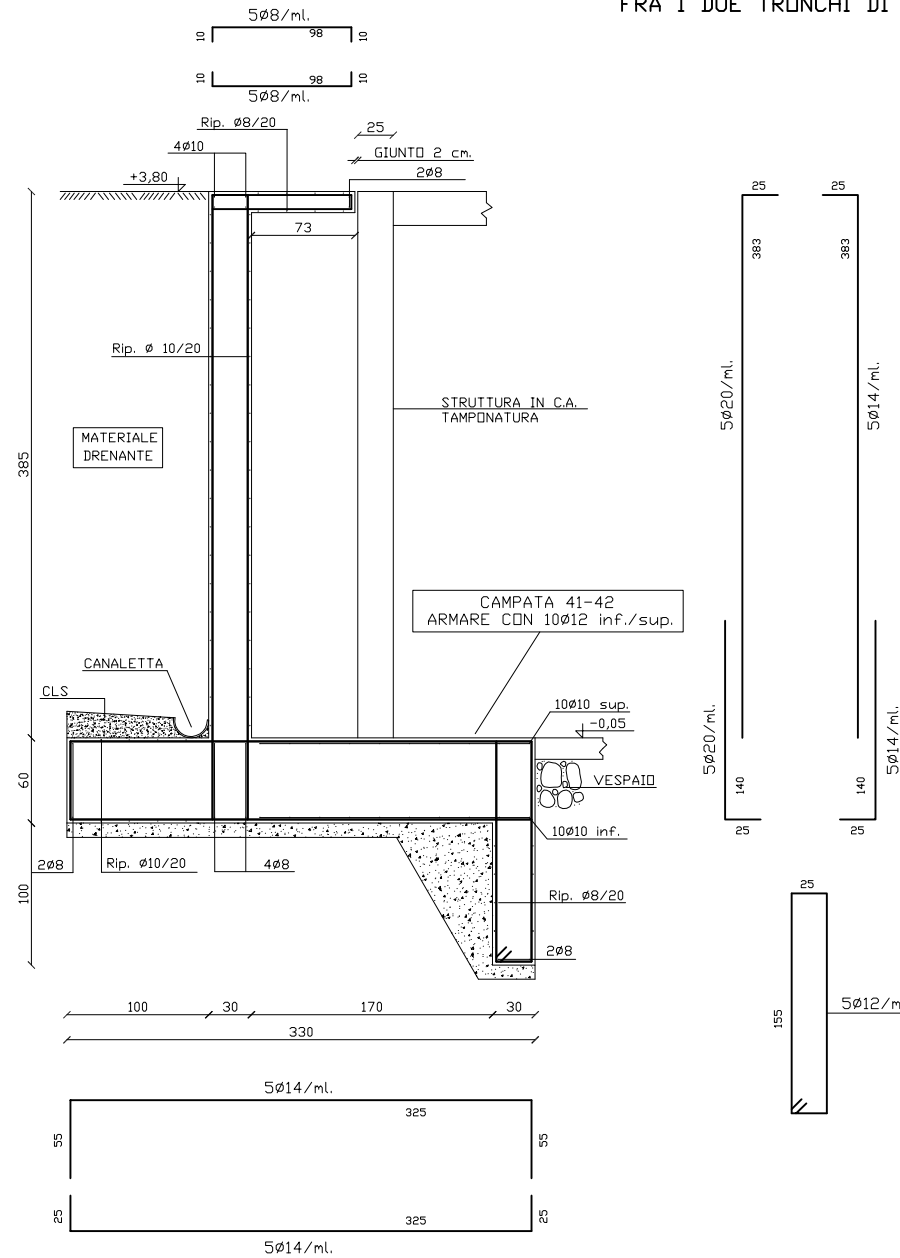


PART. RIPRESA FERRI DI AVVIO PER ARMATURE UGUALI FRA I DUE TRONCHI DI PILASTRO A/B

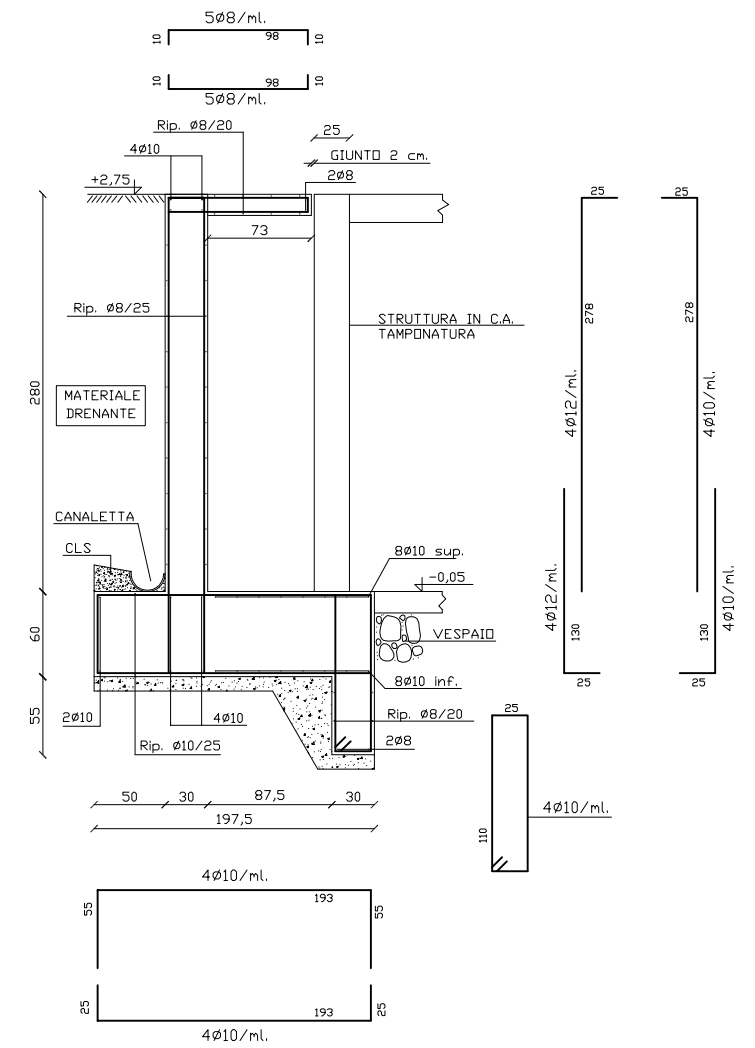
PART. ARMATURA PILASTRO/SETTO IN CORRISPONDENZA DELLA PARETE DI SOSTEGNO



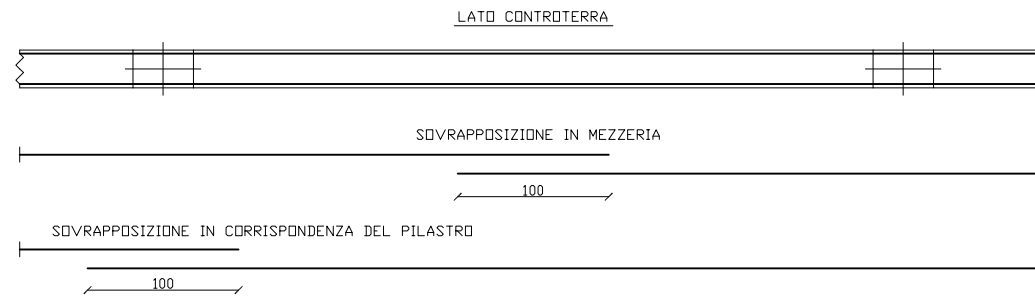
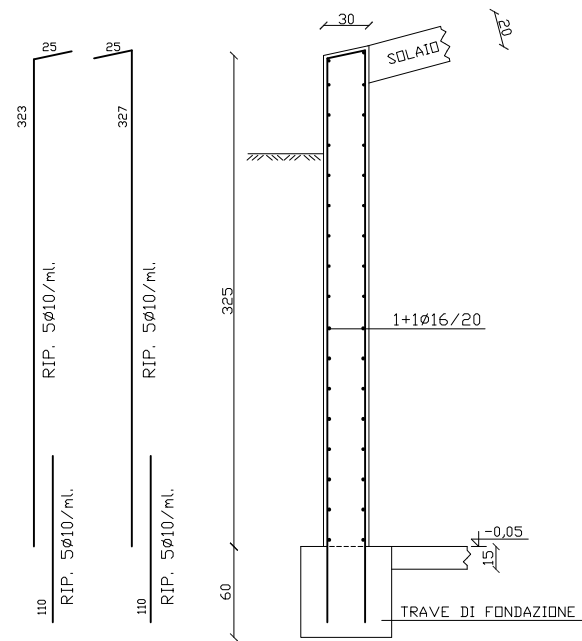
ARM. MURO TIPO (A) 1:25  
FONDAZIONI CAMPATE 46-47-48-49



ARM. MURO TIPO (B) 1:25  
FONDAZIONI CAMPATE 41-42-43-44-45-46

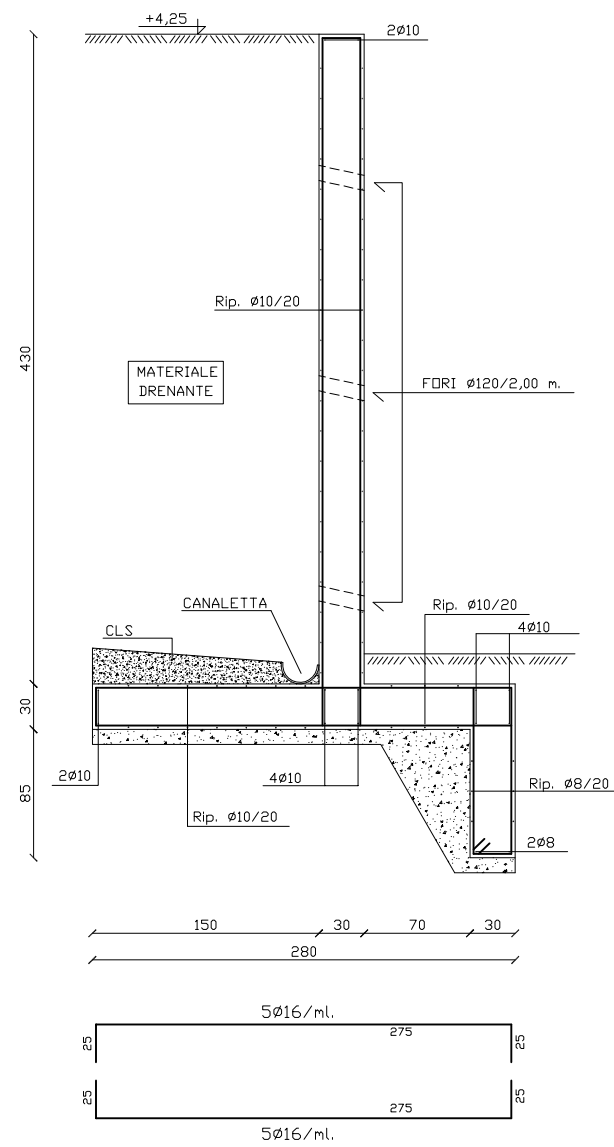


ARM. MURO TIPO (C) 1:25  
FONDAZIONI CAMPATE 23-31-36-37-38-39-40-41

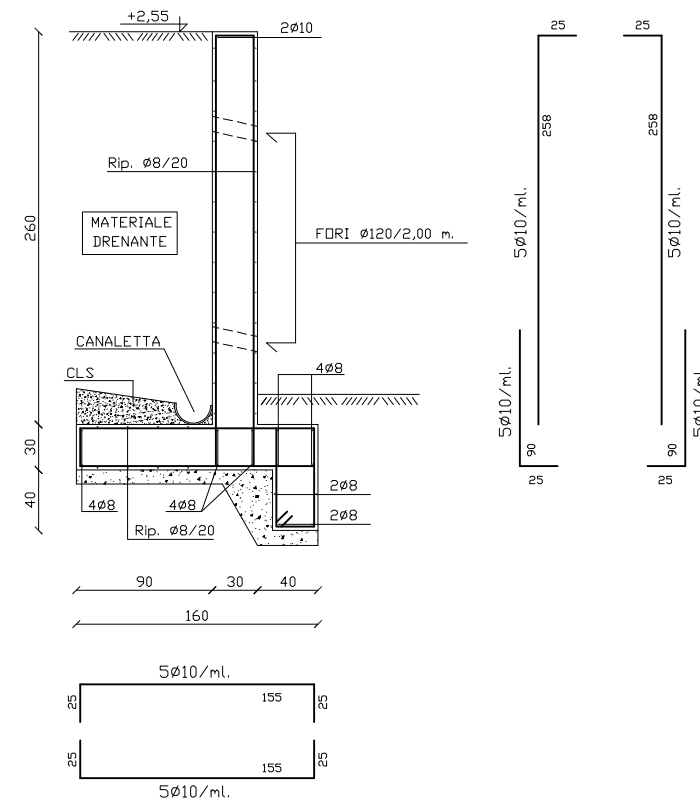
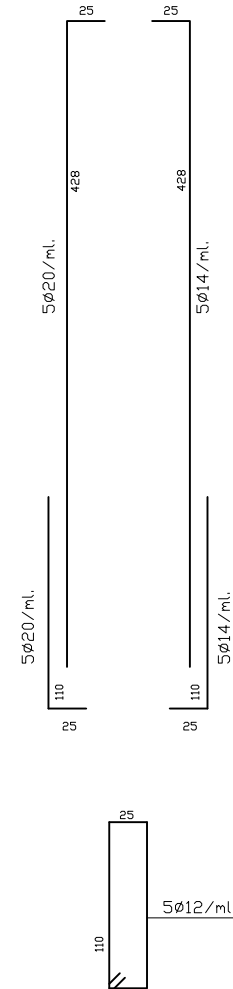


PART. SOVRAPPOSIZIONE ARMATURE DELLE PARETI TRA I PILASTRI 1:25

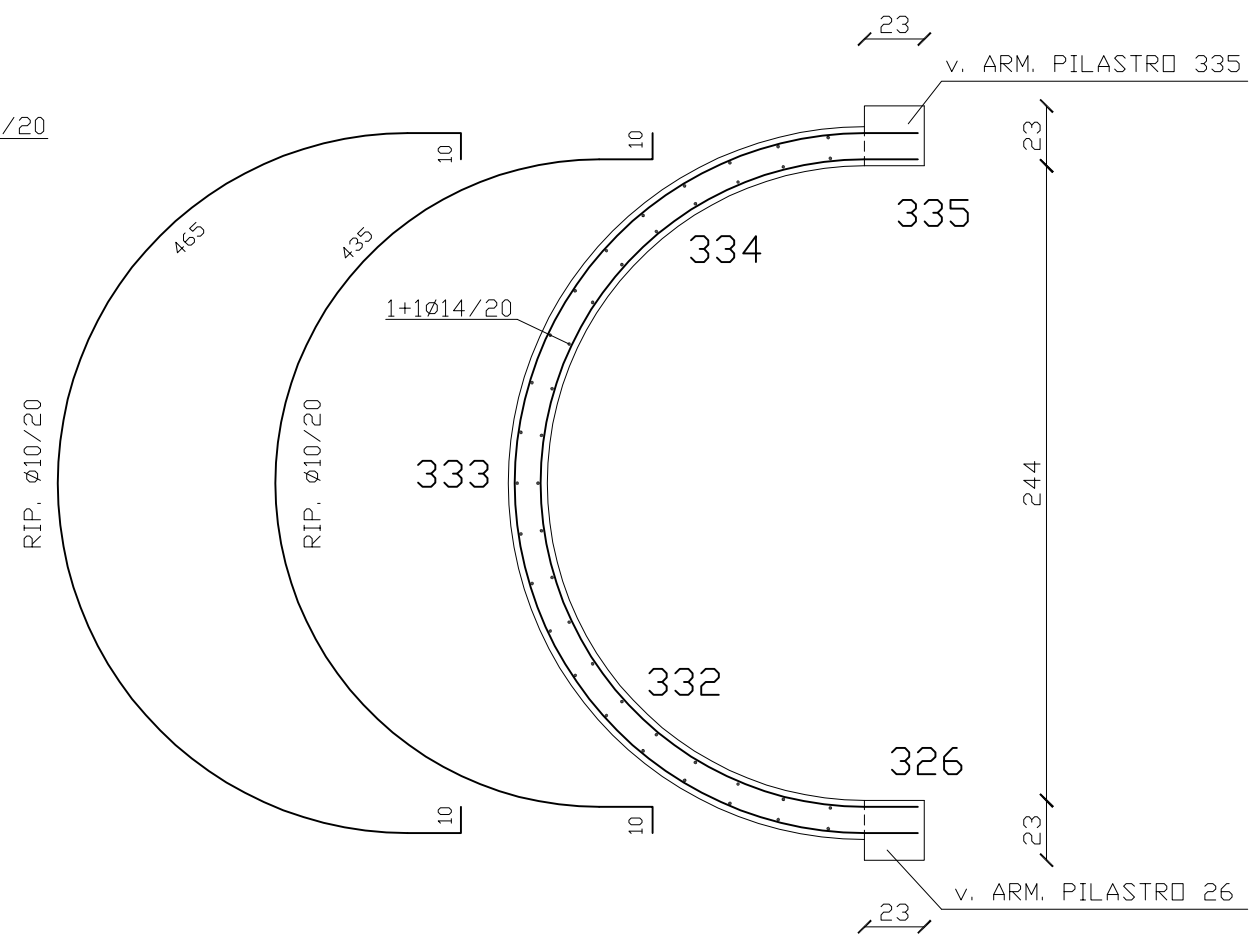
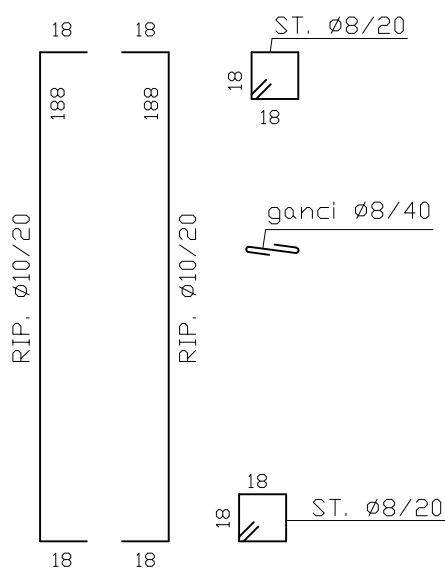
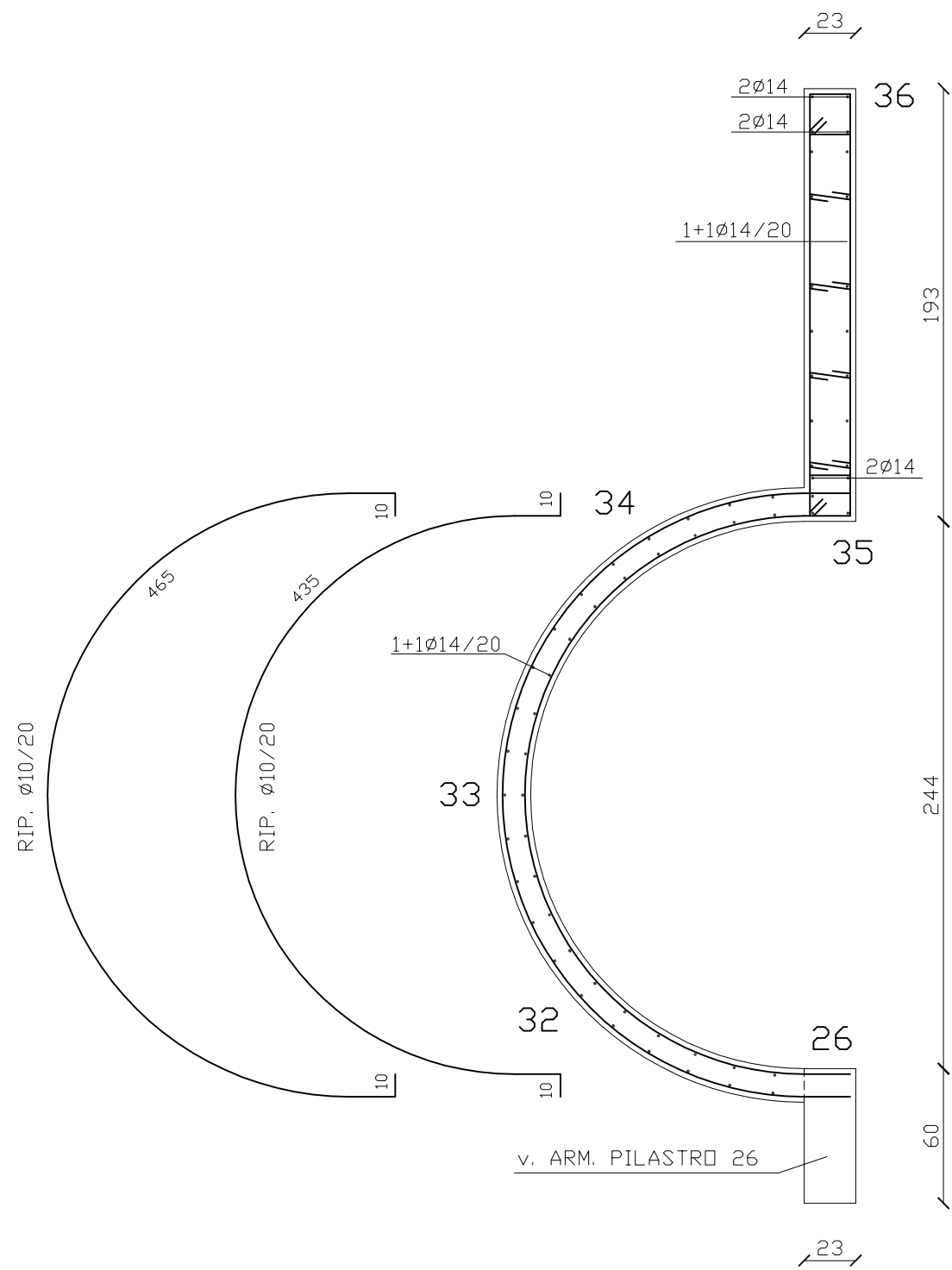
ARM. PARETE TRA I PILASTRI CAMPATE 1-4-11-22  
1:25



ARM. MURO TIPO (D) 1:25  
SISTEMAZIONI ESTERNE



ARM. MURO TIPO (E) 1:25  
SISTEMAZIONI ESTERNE

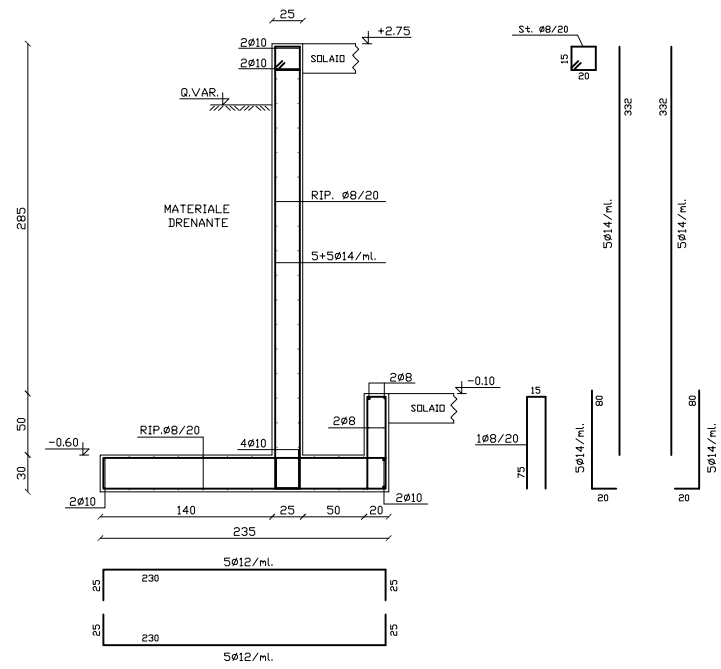


ARM. SETTO IN C.A. 26-32-33-34-35-38  
DA Q.-0,06 A Q.+8,94

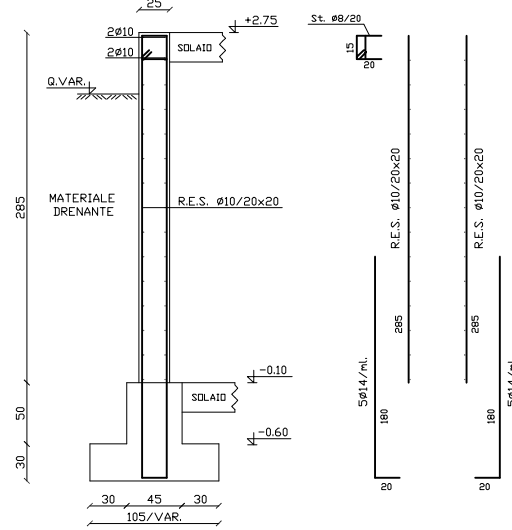
1:25

ARM. SETTO IN C.A. 326-332-333-334-335  
DA Q.+8,94 A Q.+11,94

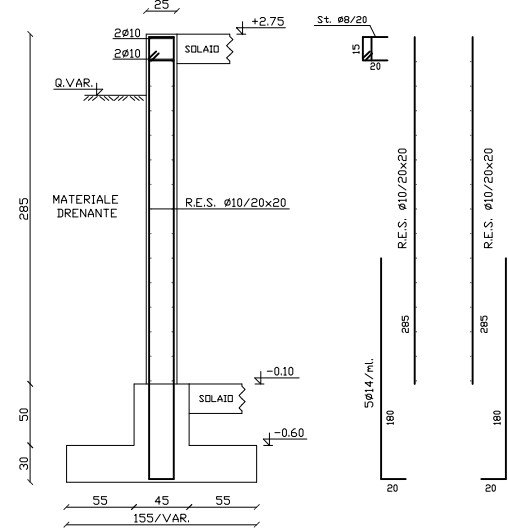




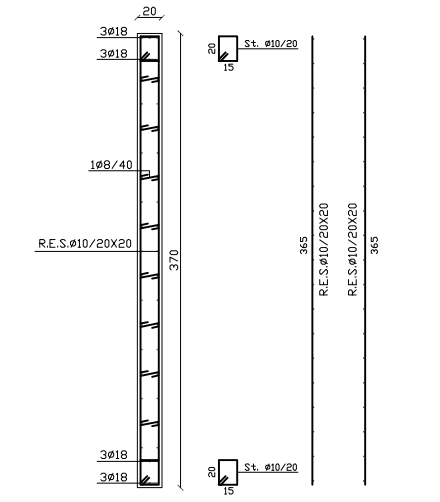
ARMATURA MURI DI SOSTEGNO VALIDA PER  
CAMPATE 1-2-3-4-5-6-7-8-9-10-11-12-15-17  
18-19-20-33-40-51-57



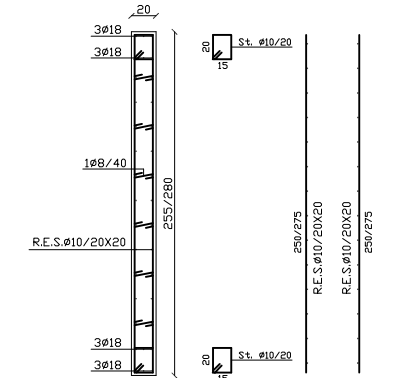
ARMATURA PARETI VALIDA PER  
CAMPATE 62-63/65-66/68-69/70-71-72/73-74  
74-75/78-80/80-81-82/83-84



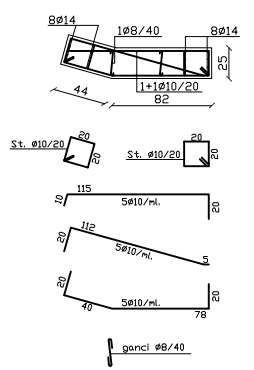
ARMATURA PARETI VALIDA PER  
CAMPATE 86-87/88-79/77-59



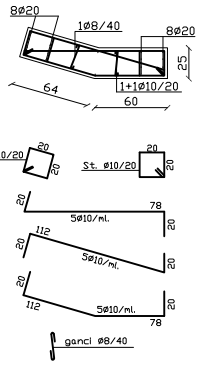
ARMATURA SETTI VANI SCALE 98-99-203  
201-202-206



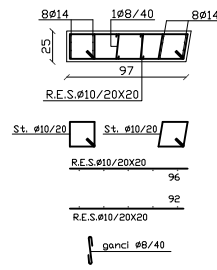
ARMATURA SETTI VANI SCALE 200-204  
205-207



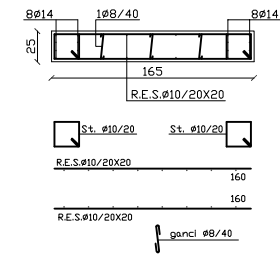
ARMATURA SETTO 75-76-78



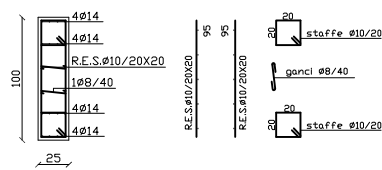
ARMATURA SETTO 84-85-86



ARMATURA SETTO 87-88



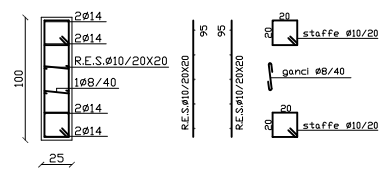
ARMATURA SETTO 2-3-4



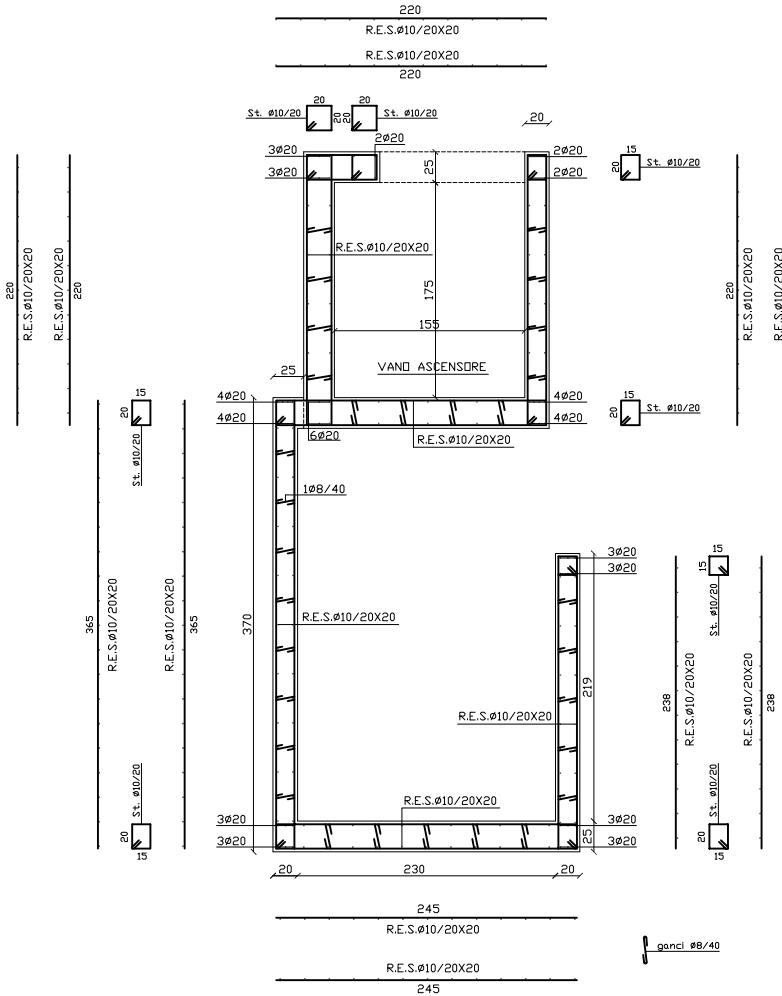
ARMATURA SETTI 77-79/69-70/41-54



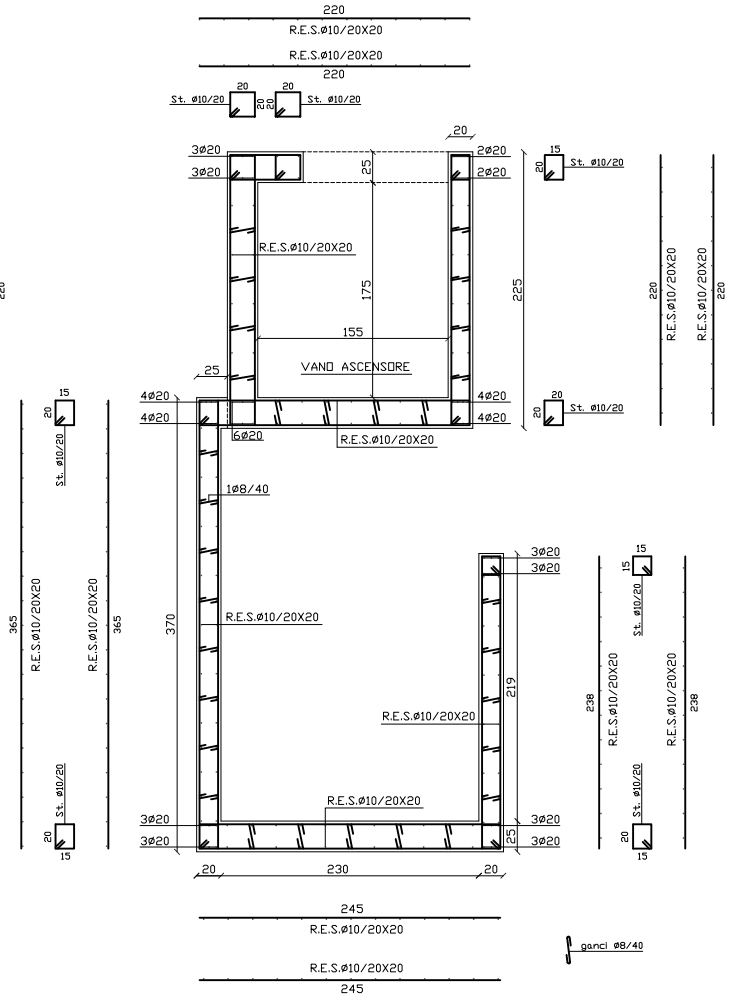
ARMATURA SETTI 66-67-68/57-59  
63-64-65



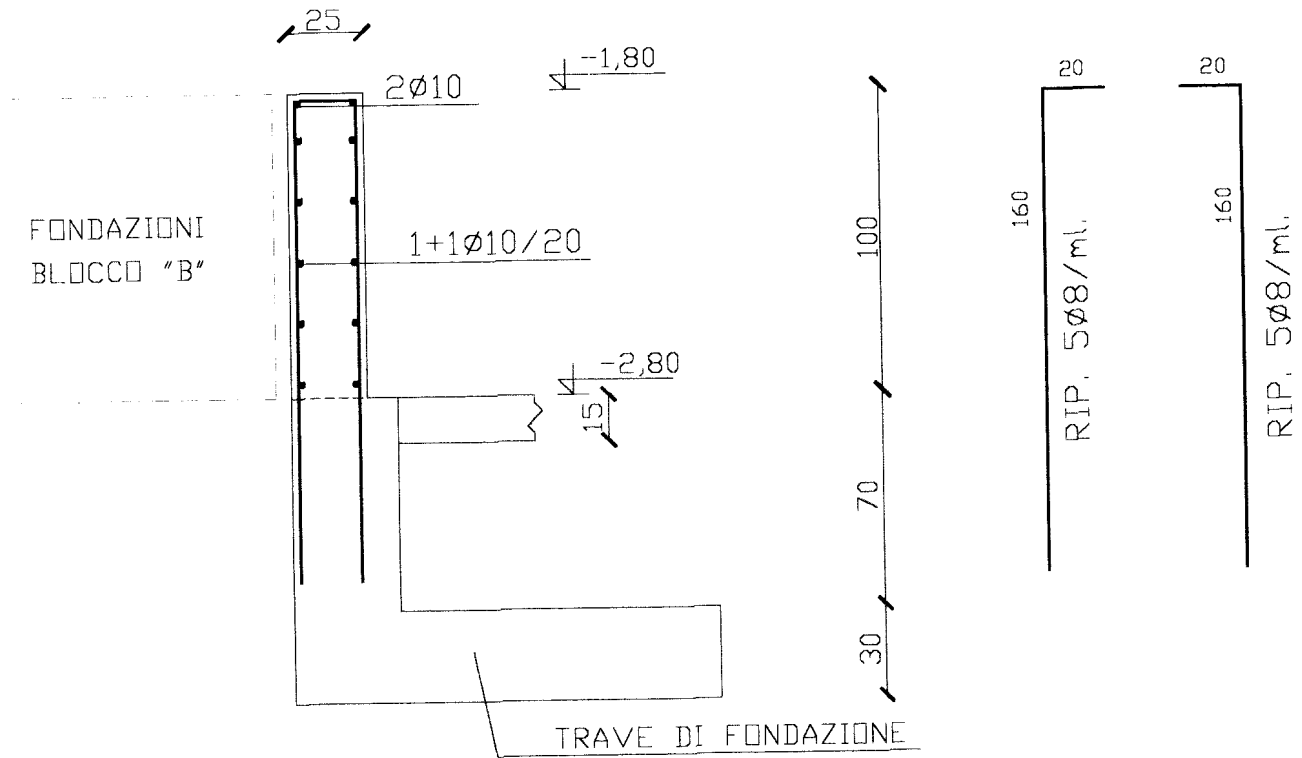
ARMATURA SETTI 21-30/27-31/39-18  
61-62/72-73/82-83



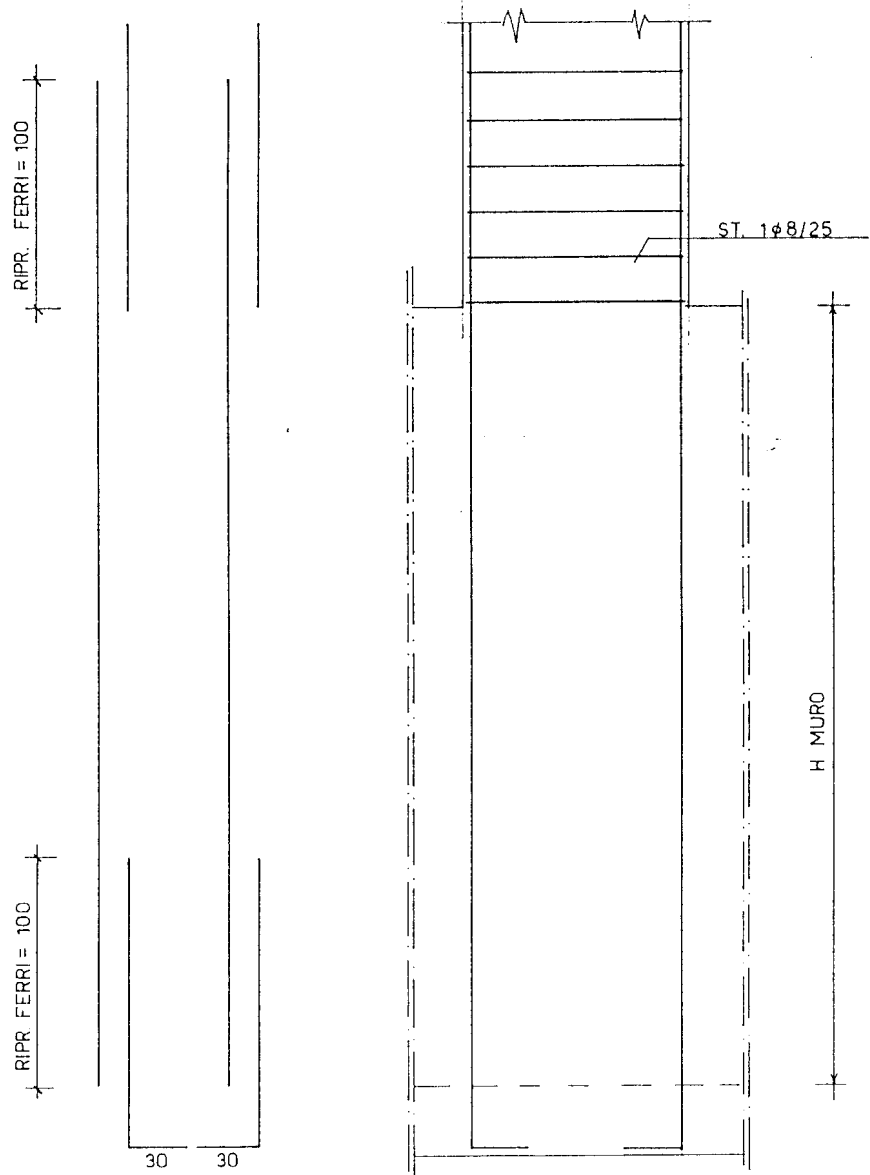
ARMATURA SETTI VAND SCALE/ASCENSORE  
7-8-9-14-16-25-26-35-36



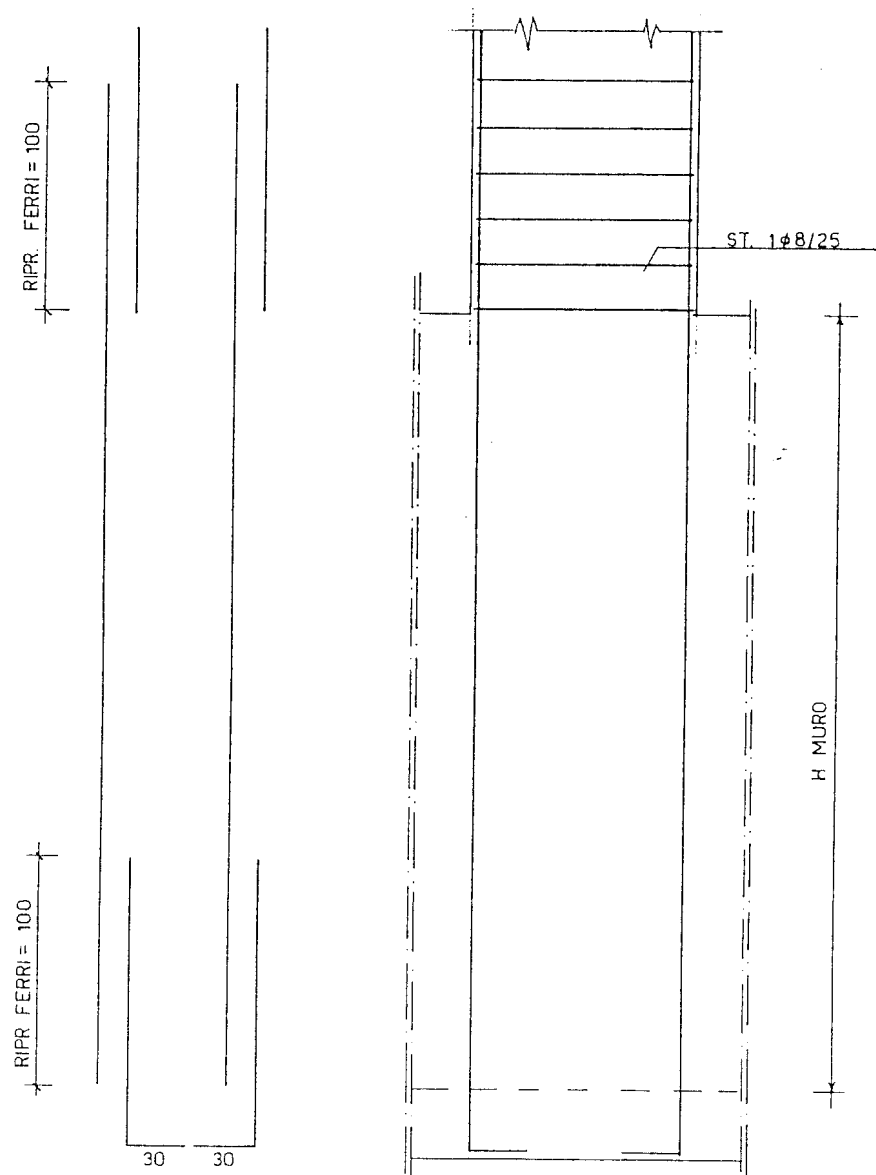
ARMATURA SETTI VAND SCALE/ASCENSORE  
17-18-19-34-37-38-49-52



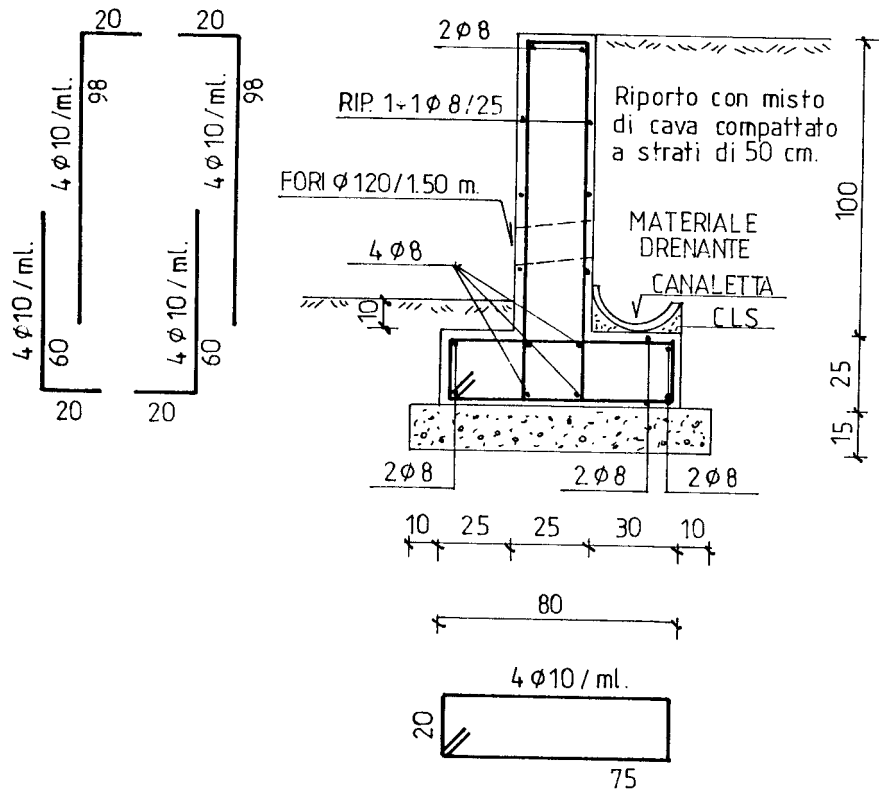
ARM. PARETI TRA I PILASTRI  
 CAMPATE 116-124 E 124-131-138 1:25



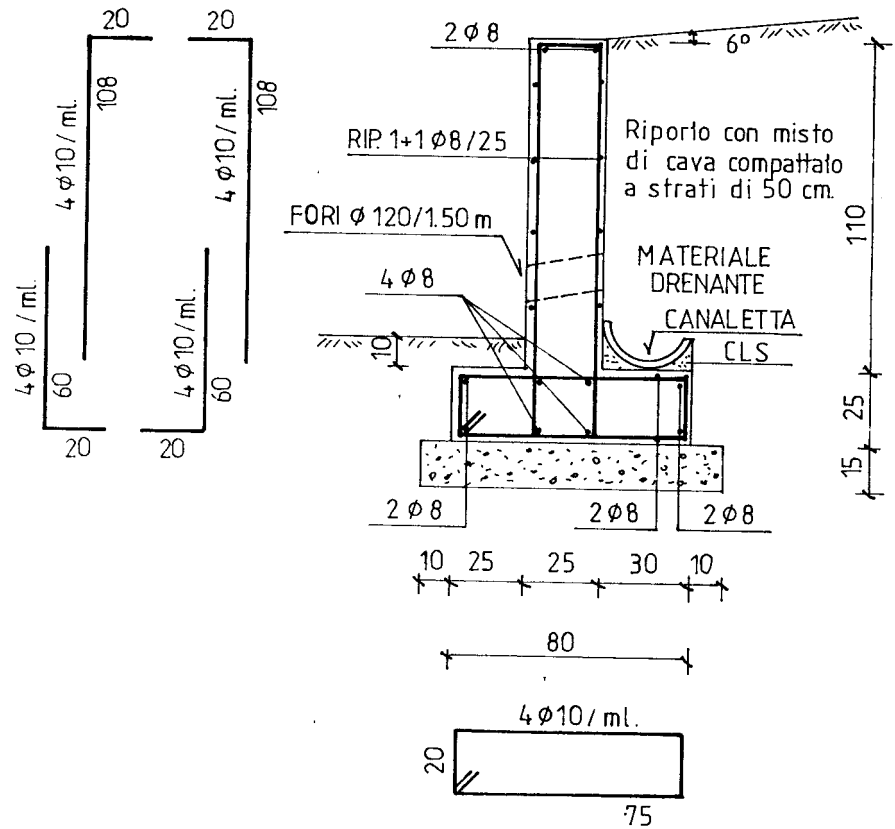
PARTICOLARE ARMATURA SETTO IN CORRISPONDENZA DEL MURO DI SOSTEGNO



PARTICOLARE ARMATURA SETTO IN CORRISPONDENZA DEL MURO DI SOSTEGNO

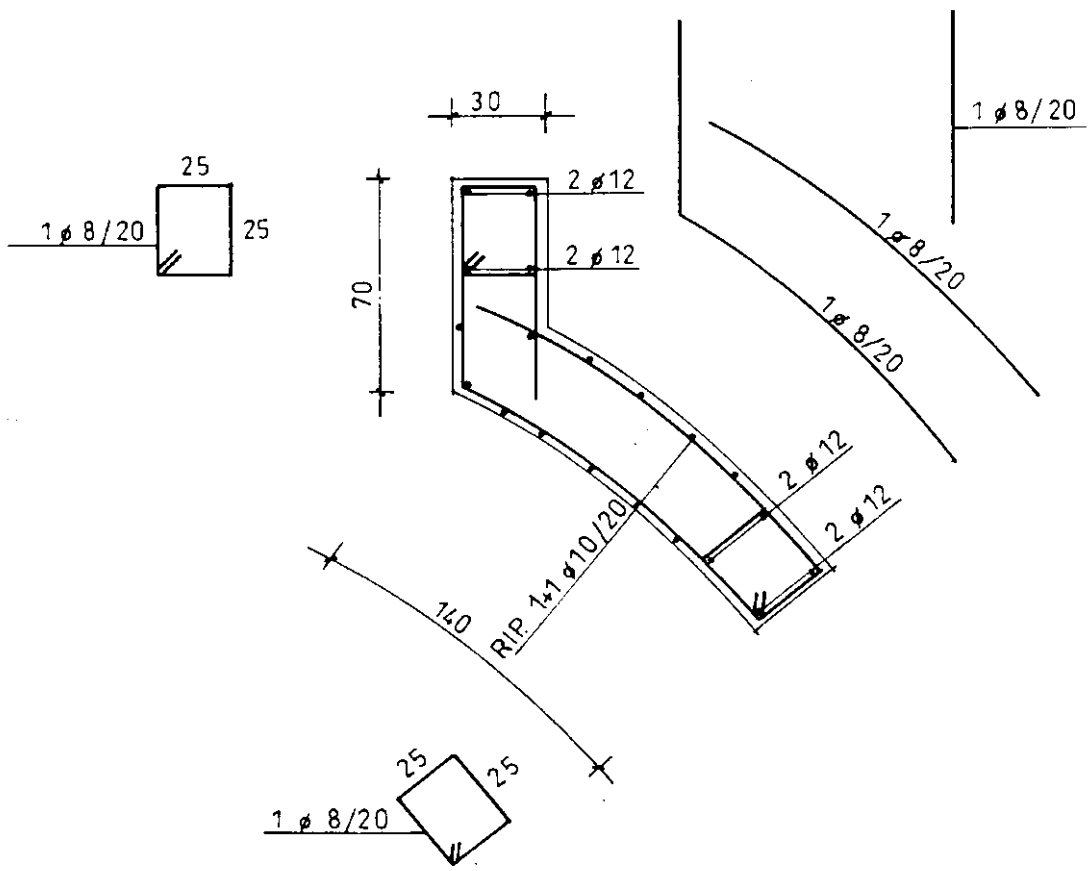


MURO DI SOSTEGNO TIPO (D)  
 H = 1,00 m. 1:25



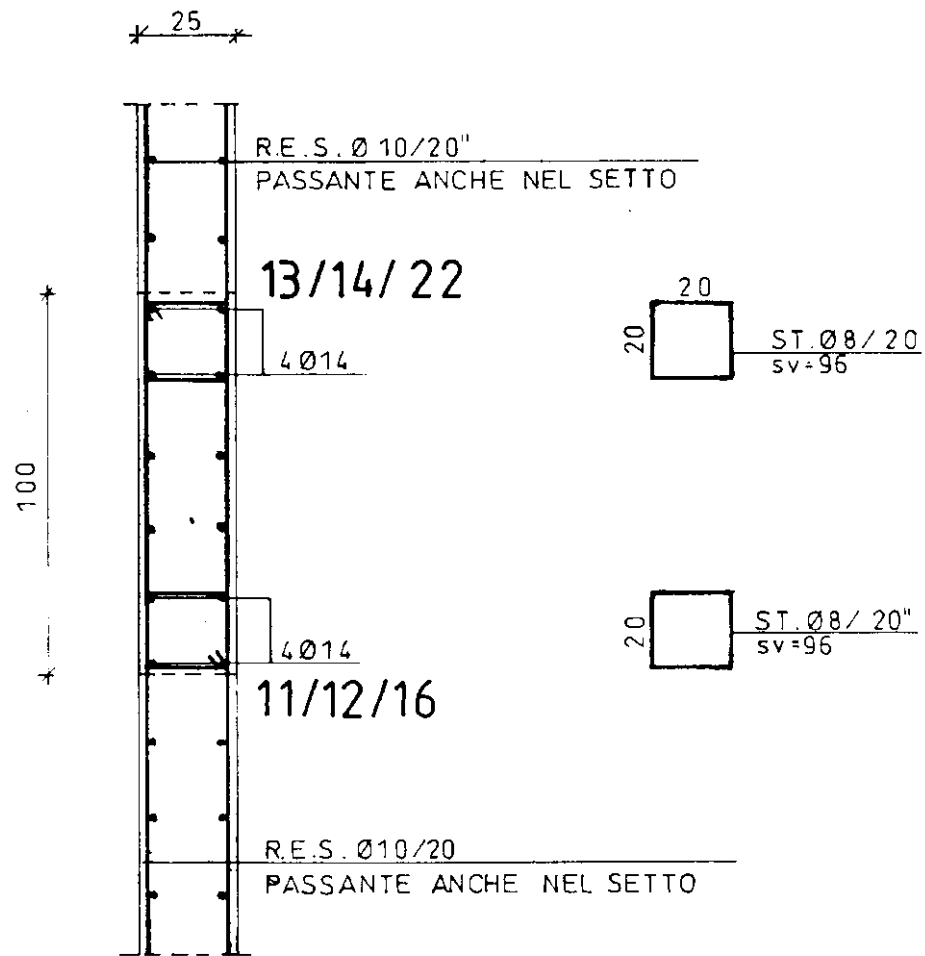
MURO DI SOSTEGNO TIPO (E)  
 1:25



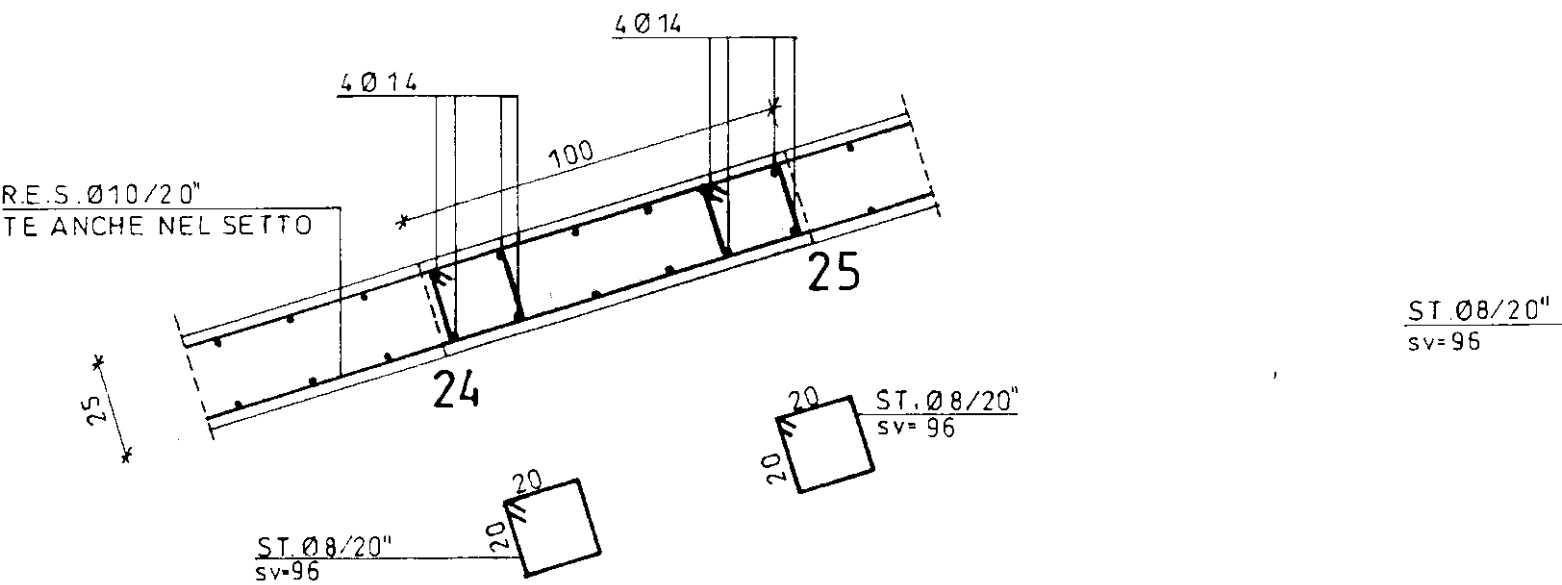


ARMATURA SETTO 206 - 207 - 211 \_ 1:25

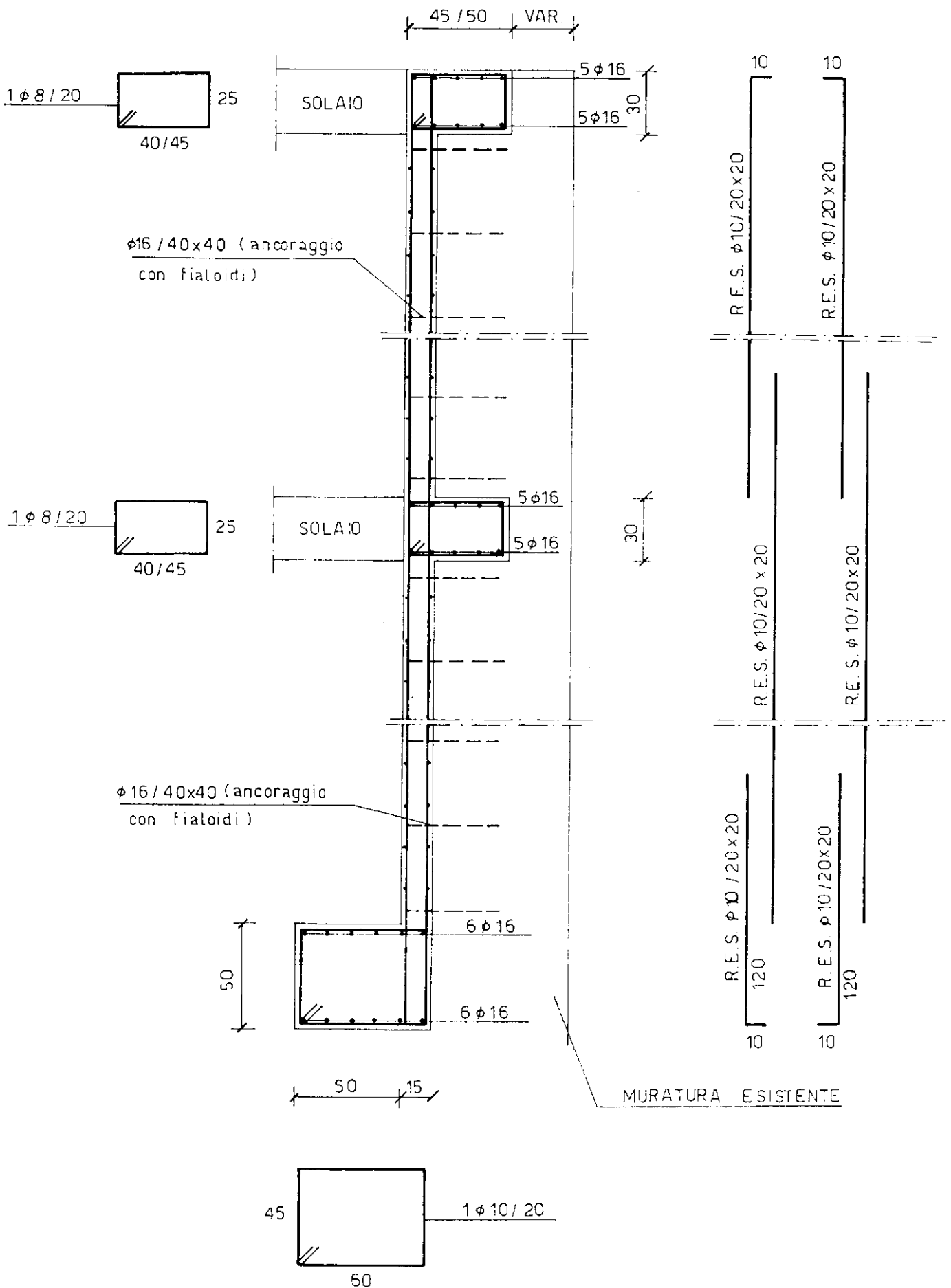
ARMATURA SETTO 11-13 12-14 16-22 1/20



ARMATURA SETTO 24-25 1/20







ARMATURA PARETI IN C.A. 1:25